

TOWN OF BRISTOL

GRANT SUMMARY DOCUMENT

(To be authorized by the Selectboard prior to completion or submission of the grant application.)

Funding Agency Name: American Association of Retired Persons (AARP)

Address: aarp.org

Date of Application Submission: 04 / 12 / 2021

Explanation of what grant funds will be used for:

Purchase up to six metal benches matching those in the Town Green to be placed on Main Street and other public properties and up to 10 new trash & recycling receptacles.

Application Amount: Approx. \$18,700

Description of Matching or Other Funds to be Used: No matching funds are required.

Name of Grant Applicant: Valerie Capels, Town Administrator

SUMMARY OF GRANT AWARD

(To be completed by Treasurer's Office)

Date authorized by Selectboard: _____

Fund # (Assigned by Treasurer's Office after receipt of grant award letter): _____

Grant Award Date: ____/____/____

Grant Number issued by Funding Agency: _____

CFDA if applicable: _____

Grant Period: ____/____/____ to ____/____/____

Grant Award Amount: \$_____

Bristol Town Administrator

From: Ian Albinson <ianalbinson@gmail.com> on behalf of Ian Albinson <ianalbinson+sb@gmail.com>
Sent: Thursday, March 25, 2021 1:00 PM
To: Bristol Town Administrator
Subject: RE: AARP grant submission?

Details on the trash cans: <https://www.theparkcatalog.com/square-powder-coated-steel-slat-trash-receptacle-double>

I'd recommend the following quantity:

QTY: 10
Price: \$806/ea
Freight: \$1000

– Ian

Ian Albinson, Selectboard Member
Town of Bristol

From: Ian Albinson <ianalbinson@gmail.com> **On Behalf Of** Ian Albinson
Sent: Wednesday, March 17, 2021 10:01 AM
To: Bristol Town Administrator <townadmin@bristolvt.org>
Subject: RE: AARP grant submission?

I'll work on getting details to you this week or next for the AARP grant.

– Ian

Ian Albinson, Selectboard Member
Town of Bristol

On Mar 10, 2021, 1:16 PM -0500, Bristol Town Administrator <townadmin@bristolvt.org>, wrote:

I think that looks good. We'd want the decals to be green. Do you have cost info?

--Valerie

Valerie Capels, Town Administrator
Town of Bristol
1 South Street
P.O. Box 249
Bristol, VT 05443
P: (802) 453-2410
E: townadmin@bristolvt.org
W: www.bristolvt.org
FB: <https://www.facebook.com/bristolvt/>
Tw: @BristolTownAdm

Please note this email message, along with any response or reply, may be considered a public record subject to disclosure under the Vermont Public Records Law (1 V.S.A. §§ 315-320).

From: Ian Albinson <ianalbinson@gmail.com> **On Behalf Of** Ian Albinson
Sent: Monday, March 8, 2021 1:53 PM
To: Bristol Town Administrator <townadmin@bristolvt.org>
Subject: RE: AARP grant submission?

Maybe something like the attached? Thoughts?

– Ian

Ian Albinson, Selectboard Member
Town of Bristol

On Mar 7, 2021, 12:07 PM -0500, Bristol Town Administrator <townadmin@bristolvt.org>, wrote:

Hi Ian,

The deadline is Wednesday April 14. Do you have a new trash/recycling receptacle design in mind that you would recommend?

--Valerie

Valerie Capels, Town Administrator
Town of Bristol
1 South Street
P.O. Box 249
Bristol, VT 05443
P: (802) 453-2410
E: townadmin@bristolvt.org
W: www.bristolvt.org
FB: <https://www.facebook.com/bristolvt/>
Tw: @BristolTownAdm

Please note this email message, along with any response or reply, may be considered a public record subject to disclosure under the Vermont Public Records Law (1 V.S.A. §§ 315-320).

From: Ian Albinson <ianalbinson@gmail.com> **On Behalf Of** Ian Albinson
Sent: Friday, March 5, 2021 3:13 PM
To: Bristol Town Administrator <townadmin@bristolvt.org>
Subject: AARP grant submission?

Val,

What's the timeframe on this one? You had planned on submitting, correct? Let me know if you need help.

I'd love to be able to add new trash/recycling receptacles to it if possible.

– Ian

Ian Albinson, Selectboard Member
Town of Bristol

Square Powder Coated Steel Slat Trash Receptacle - Double

Item #: 108-1209

Double-sided openings
11 3/4" x 7"

Double-sided openings
8" x 5"



Choose your decals to customize your unit

3/4" feet provides stability

B/L Description:

(Ctn1, Base) 34"H x 32"W x 25"D

(Ctn2, Lid) 16"H x 31"W x 24"D

Material Process: Steel Fabrication and Rotational Molding

Standard Inclusions: (2) 25-Gallon Black Powder-coated Galvanized Liner with Handles, (1) Decal Set, (1) Lid w/ Cable attachment

Unit Size	Capacity	Weight
39-1/2" H 29-3/4" W 21-3/4" D	50-Gallons (2) 25-Gallon Liners	100 lbs



- Ships via Truck.
- Lid unit size: 14" H x 29-3/4" W x 21-3/4" D. Base unit size: 29-1/4" H x 29" W x 21-1/4" D.

ArchTec Parkview provides an upscale, sophisticated appearance to any décor. This environmental friendly unit is perfect for any indoor/outdoor application and supports your facility's green initiatives.

- Attractive, double-sided split lid with built-in divider keeps your contents easily separated.
- Lid cable attachment keeps the lid secured to the base.
- Lid is constructed of durable polyethylene – won't rust, dent or chip
- Set of decals included to clearly identify your recycling program requirements.
 - Blue/White Decals included: Trash, Aluminum, Glass, Plastic Bottles, Plastic Bags, Paper, Mixed Recyclables, and two recycle logos
- Waste Container Base is constructed of heavy-gauge, fire safe vertical steel rails; unit offers extreme durability.
- Weatherproof, powder-coated finish provides long service years.
- 3/4" built-in feet add stability and help prevent unit from being damaged by the weather elements
- Z-bracket anchoring system (located at the bottom of the unit) allows the unit to be secured in place.
- Includes two removable, black powder-coated 25-gallon galvanized liners with built-in handles and Grab Bag System.
- Grab Bag System secures your trash liner in place and out of site.
- Made in U.S.A. and China
- 1-year warranty



Made out of recycled steel



Product is ADA compliant



Optional security hardware is available



Square Powder Coated Steel Slat Trash Receptacle - Double

[Be the first to review this product \(https://www.theparkcatalog.com/review/product/list/id/2048534/#review-form\)](https://www.theparkcatalog.com/review/product/list/id/2048534/#review-form)

\$806.00

Buy 3 for **\$789.88** each and **save 2%**
Buy 6 for **\$773.76** each and **save 4%**
Buy 11 for **\$757.64** each and **save 6%**

Quick Overview

- Dual function trash and recycling center
- Double sided, oval or rectangular opening
- Recycling decals included
- Ships in two cartons
- 1-year warranty

© 2019 The Park Catalog. All Rights Reserved.
<https://www.theparkcatalog.com/>

Need Help? Chat with a representative now.



[Register/Login](#) || Call us: 800-284

[company](#) [contact](#)

PRODUCTS

GALLERY

RESOURCES

CUSTOMIZE

EXPRESS

CATALOG

SCHENLEY

f

- [BENCHES](#)
- [BENCH RECEPTACLES](#)
- [CYCLING CONTAINERS](#)
- [CLEAN RACKS](#)
- [BENCHES & CHAIRS](#)
- [TABLES](#)
- [TABLE RECEPTACLES](#)
- [TABLETTERS & TREE GUARDS](#)
- [KIDREN'S FURNITURE](#)
- [RELLAS](#)
- [TABLES & ACCESSORIES](#)
- [PRODUCT SERIES](#)
- [LANDSCAPE ALTERNATIVES](#)
- [NEW PRODUCTS](#)

[Home](#) › [PRODUCTS](#) › [BENCHES](#) › [SCHENLEY](#)



SCHENLEY BENCH WITH BACK

Tear-drop detailing entwined with wide flowing cast aluminum legs present a sophisticated furniture statement in a versatile and functional design. Bench with back is covered by Patent No. Des. D629,233. Table set is covered by Patent No. Des. D818,296. [View the entire Schenley Series here.](#)

Click on the box(es) below to collapse product details, documentation and pricing.

SC24 - Schenley bench with back 4 ft

Length: 48 7/8 in.
Width: 25 3/4 in.
Height: 31 11/16 in.
Weight: 150
Price: \$1,325.00
Downloads: [CAD File \(.dwg\)](#) | [Product Data \(.pdf\)](#) | [CSI Specs \(.doc\)](#) | [Onsite Photo \(.jpg\)](#) |

SC24-R - Schenley bench with back 4 ft - rods

Length: 48 7/8 in.
Width: 25 3/4 in.
Height: 31 11/16 in.
Weight: 175
Price: \$1,430.00
Downloads: [CAD File \(.dwg\)](#) | [Product Data \(.pdf\)](#) |

SC24C - Schenley bench with back 4 ft and center arm

Length: 48 7/8 in.
Width: 25 3/4 in.
Height: 31 11/16 in.
Weight: 175
Price: \$1,635.00
Downloads: [CSI Specs \(.doc\)](#) |

SC26 - Schenley bench with back 6 ft

Length: 72 in.
Width: 25 3/4 in.
Height: 31 11/16 in.
Weight: 175
Price: \$1,400.00
Downloads: [CAD File \(.dwg\)](#) | [Product Data \(.pdf\)](#) | [CSI Specs \(.doc\)](#) | [Studio Photo \(.jpg\)](#) | [Onsite Photo \(.jpg\)](#) |

SC26-IPE - Schenley bench with back 6 ft - Ipe

Length: 72 in.
Width: 25 3/4 in.
Height: 31 11/16 in.
Weight: 175
Price: \$1,510.00
Downloads: [Product Data \(.pdf\)](#) | [Studio Photo \(.jpg\)](#) |

SC26-R - Schenley bench with back 6 ft - rods

Length: 72 in.
Width: 25 3/4 in.
Height: 31 11/16 in.
Weight: 200
Price: \$1,510.00
Downloads: [CAD File \(.dwg\)](#) | [Product Data \(.pdf\)](#) | [Studio Photo \(.jpg\)](#) | [Onsite Photo \(.jpg\)](#) |

SC26-RPS - Schenley bench with back 6 ft - recycled plastic

Length: 72 in.
Width: 25 3/4 in.
Height: 31 11/16 in.
Weight: 175
Price: \$1,510.00
Downloads:

SC26C - Schenley bench with back 6 ft and center arm

Length: 72 in.
Width: 25 3/4 in.
Height: 31 11/16 in.
Weight: 200
Price: \$1,695.00
Downloads: [Product Data](#) (.pdf) | [CSI Specs](#) (.doc) | [Studio Photo](#) (.jpg) | [Onsite Photo](#) (.jpg) |

SC28 - Schenley bench with back 8 ft

Length: 92 in.
Width: 25 3/4 in.
Height: 31 11/16 in.
Weight: 195
Price: \$1,525.00
Downloads: [CAD File](#) (.dwg) | [Product Data](#) (.pdf) | [CSI Specs](#) (.doc) |

SC28-R - Schenley bench with back 8 ft - rods

Length: 92 in.
Width: 25 3/4 in.
Height: 31 11/16 in.
Weight: 225
Price: \$1,630.00
Downloads: [CAD File](#) (.dwg) | [Product Data](#) (.pdf) |

in SC28C - Schenley bench with back 8 ft and center arm

tw Length: 92 in.
Width: 25 3/4 in.
Height: 31 11/16 in.
ig Weight: 225
pr Price: \$1,825.00
Downloads: [CSI Specs](#) (.doc) |



PRODUCT DETAILS

MATERIALS

Fully-welded commercial-grade steel construction. Cast aluminum legs. Options for Ipe or recycled plastic slats.

FINISH

Protected by the durable KEYSHIELD® polyester powder coat finish applied to a 7-15 mil thickness. View our [Color Chart here](#).

OPTIONS

Support: bolt down or freestanding; Slats: steel slats, steel rods, Ipe hardwood, or recycled plastic; Inquire about Designs In Time quick-ship option.

CUSTOMIZATION

With our made-to-order manufacturing, [customization](#) capabilities are endless. Consider custom lengths, heights, colors and curves. Personalize with [plaques](#), [laser cuts](#), [nameplates](#) or [decals](#). Add additional arms to benches or customized lids to litter receptacles. Incorporate [alternative materials](#) such as wood or recycled plastic. And if all else fails, [talk to us](#) about completely original concepts.

COORDINATING SITE FURNISHINGS



Schenley Bench With Back

















Schenley Flat Bench



Schenley Table Set

PRODUCTS

-  Benches
-  Receptacles
-  Recycling Containers
-  Table Racks
-  Tables & Chairs
-  Tables
-  Receptacles
-  Benches & Tree Guards
-  Children's Furniture
-  Tables
-  Tables & Accessories
-  Table Series
-  Landscape Alternatives
-  Table Products

GALLERY

- Retail Development
- Education
- Municipal Projects
- Corporate & Healthcare
- Landscape Design

RESOURCES

- Color Chart
- Materials
- Catalog
- ADA Information
- LEED Certification
- Recycling & Compost
- Made in the USA
- Care & Maintenance
- Installation Information
- Warranty
- CAD Files
- 3D Models
- SketchUp Files
- Product Data Sheets

CUSTOMIZE

- Decals
- Laser Cuts
- Nameplates
- Plaques
- Product Alterations
- Memorial Products
- KeyshieldArt™ Graphics
- KeyshieldArt™ Wood Grain

EXPRESS

CATALOG

COMPANY

- Who We Are
- Why We're Great
- How We're Green
- FAQs
- Government Contracts
- Careers
- Privacy Policy
- Terms & Conditions

CONTACT

REGISTER/LOGIN

BLOG





2020 COLOR PALETTE

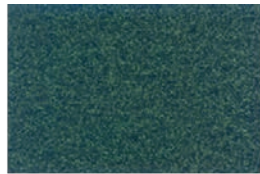
Safeguarded with our trademark KEYSHIELD® powder coating, Keystone Ridge Designs' superb products are further enhanced with a lustrous, durable finish that is unparalleled in product protection. KEYSHIELD® is our stamp of armored excellence that is foremost in site furniture finishes.

The KEYSHIELD® process involves cleaning the substrate, phosphatizing the product in the washing stage, and armoring the product in 7-15 mil thickness of color polyester powder coating. This finish protects each piece of furniture from chipping, cracking and UVA damage. The strength, durability and quality of the KEYSHIELD® finish is backed by a *three-year warranty*.

2020 STANDARD KEYSHIELD® COLOR OPTIONS



COPPER VEIN • PLRS 90242 *



VERDI GREEN • SRSS 90079 *



MATTE BLACK • 38/80020



GLOSS BLACK • 38/80010



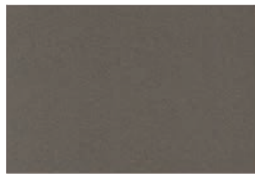
BRONZE • 39/60020



CHAMPAGNE • 349/68780



HUNTER GREEN • RAL 6009



CHROMITE • 38/90018



SAPPHIRE • RAL 5003



CHOCOLATE • RAL 8028



CHARCOAL • RAL 7022



EVERGREEN • 39/50060



SPARKLE SILVER • 49/90450



NANTUCKET BLUE • RAL 5005



BURGUNDY • RAL 3005

Colors may vary slightly due to printing processes. SAFETY YELLOW is available upon request for no added charge. An additional 160 custom colors and color matching are available for a surcharge. Colors and metal samples available upon request.

* Texture Finishes

PROPRIETARY STATEMENT

This document and all information shown hereon are the exclusive property of Keystone Ridge Designs, Inc.® This document is furnished with the express understanding that neither it nor the information on it is to be disclosed or

reproduced in whole or in part, or used in any way, either directly or indirectly, for the benefit of anyone other than Keystone Ridge Designs, Inc.® without its written consent.

