

**CERTIFICATE OF HIGHWAY MILEAGE
 YEAR ENDING FEBRUARY 10, 2022**

Fill out form, make and file a copy with the Town Clerk, and submit the Mileage Certificate on or before February 20, 2022 to: Vermont Agency of Transportation, Division of Policy, Planning and Intermodal Development, Mapping Section via email to: aot.mileagecertificates@vermont.gov or if necessary via mail to: VTrans PPAID - Mapping Section, 219 North Main Street, Barre VT 05641.

We, the members of the legislative body of BRISTOL in ADDISON County on an oath state that the mileage of highways, according to Vermont Statutes Annotated, Title 19, Section 305, added 1985, is as follows:

PART I - CHANGES TOTALS - Please fill in and calculate totals.

Town Highways	Previous Mileage	Added Mileage	Subtracted Mileage	Total	Scenic Highways
Class 1	1.225				0.000
Class 2	11.090				0.000
Class 3	24.14	0.14			0.000
State Highway	13.336				0.000
Total	49.791	0.14			0.000
* Class 1 Lane	0.000				
* Class 4	5.60				0.000
* Legal Trail	0.00				

* Mileage for Class 1 Lane, Class 4, and Legal Trail classifications are NOT included in total.

PART II - INFORMATION AND DESCRIPTION OF CHANGES SHOWN ABOVE.

1. **NEW HIGHWAYS:** Please attach Selectmen's "Certificate of Completion and Opening".
 Extension of Firehouse Drive (TH-347) by 0.14 miles to provide access to new business park.

2. **DISCONTINUED:** Please attach SIGNED copy of proceedings (minutes of meeting).

3. **RECLASSIFIED/REMEASURED:** Please attach SIGNED copy of proceedings (minutes of meeting).

4. **SCENIC HIGHWAYS:** Please attach a copy of order designating/discontinuing Scenic Highways.

IF THERE ARE NO CHANGES IN MILEAGE: Place an X in the box and sign below.

PART III - SIGNATURES - PLEASE SIGN.

Signatures of Selectmen/ Aldermen/ Trustees: _____

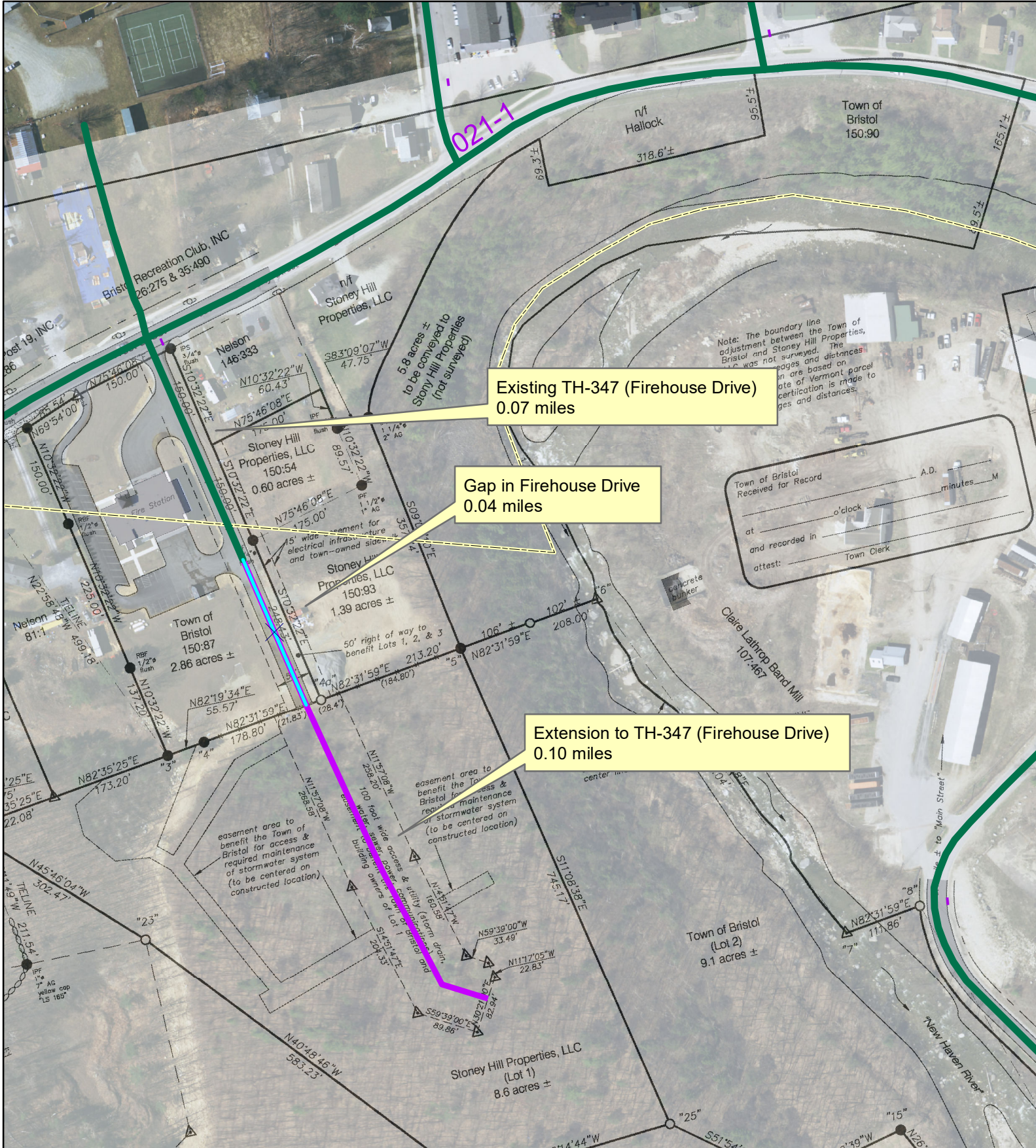
Signature of T/C/V Clerk: _____ Date Filed: _____

Please sign ORIGINAL and return it for Transportation signature.

AGENCY OF TRANSPORTATION APPROVAL: Signed copy will be returned to T/C/V Clerk.

APPROVED: _____
 Representative, Agency of Transportation

DATE: _____



Bristol TH-347 (Firehouse Drive) Extension