

# Bristol Munsill Avenue Sidewalk Scoping Study

Local Concerns Meeting

May 4, 2022



DuBois & King inc.



# Why We Are Here: Sidewalk Or No Sidewalk? If So, Where and How?



# What IS a Scoping Study?

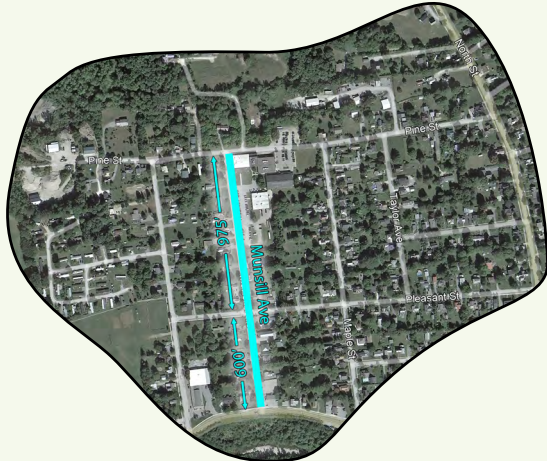
TOWN PLAN

Public Engagement: High



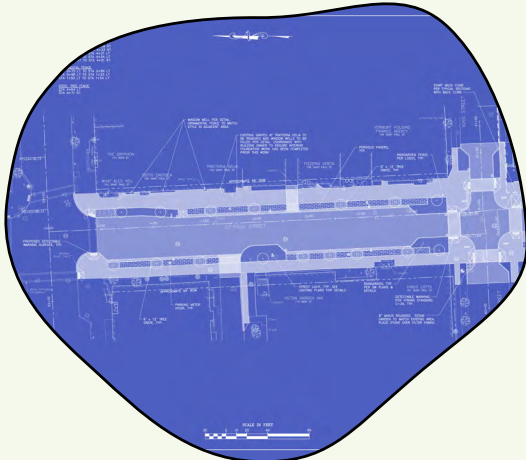
SCOPING STUDY

Public Engagement: Moderate



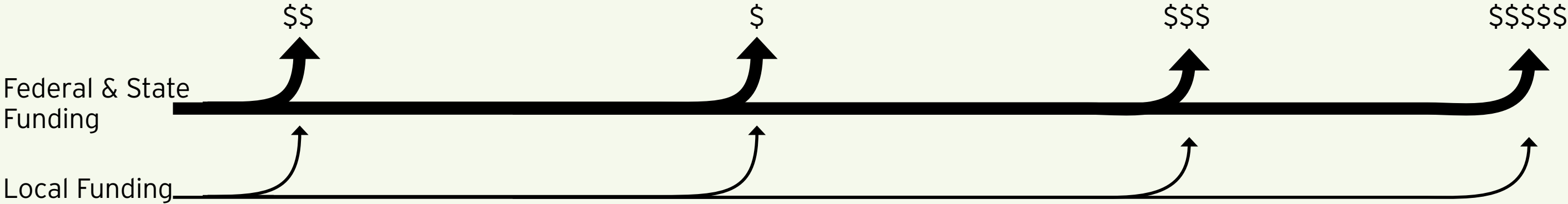
CONSTRUCTION DOCUMENTS & PERMITS

Public Engagement: Low



PHYSICAL CONSTRUCTION

Public Engagement: Minimal



# The Goal

Provide the Town of Bristol with a **sidewalk prioritization study** that illustrates likely sidewalk alignments along Munsill Avenue, anticipated conflicts and permitting requirements, as well as cost estimates.

This study will prepare the town for the **next step of applying for construction funding**.

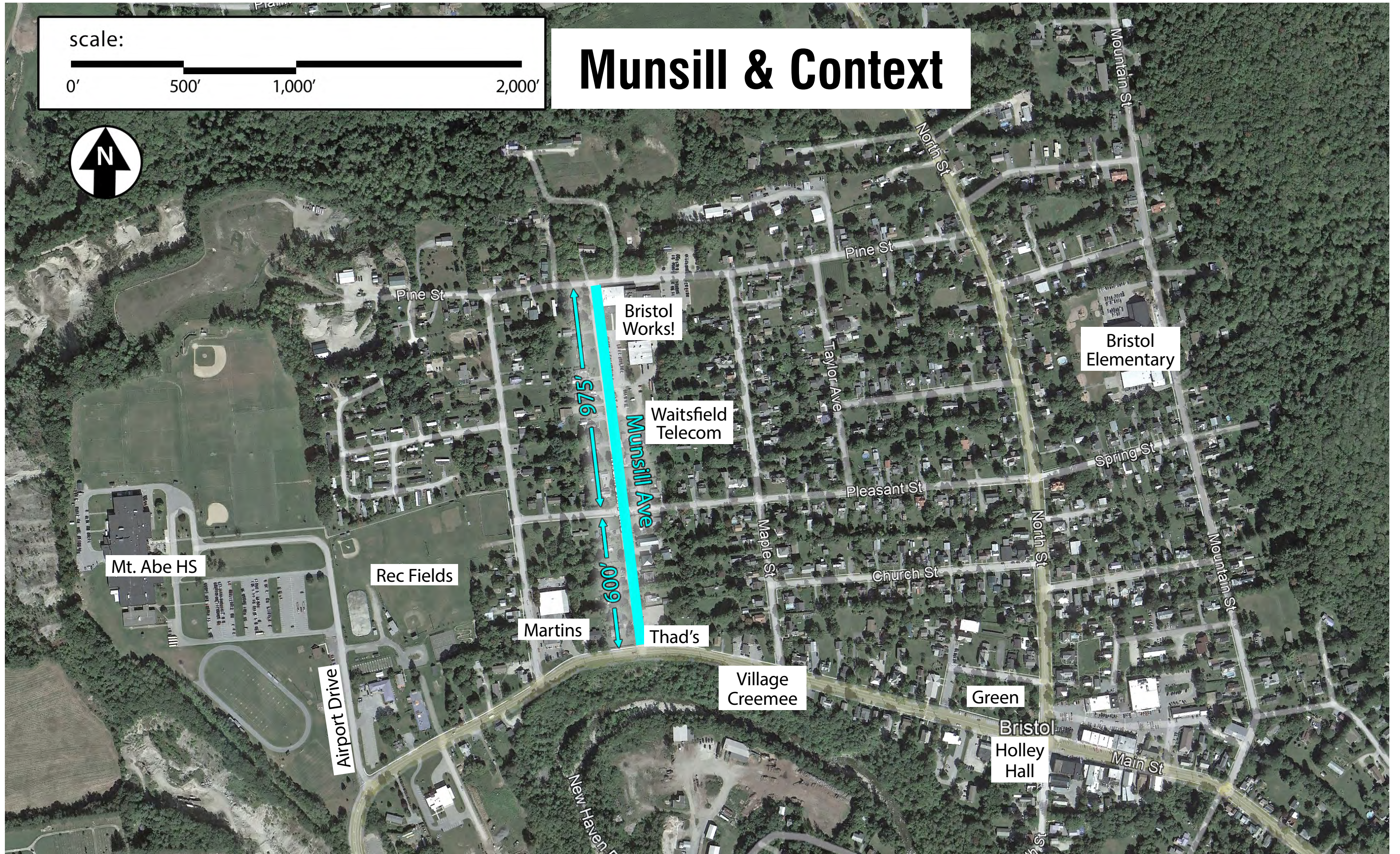
# Why Munsill Avenue?

1. **No** sidewalk currently
2. Connector to **Employment Center** at Bristol Works!
  - Includes Police Station and Medical Office
  - This means more truck traffic on Munsill Avenue
  - On the shuttle route for Tri-Valley Transit
3. **Residential** single/multifamily properties
4. Part of a broad initiative to have a **completely walkable Bristol**, including at Airport Drive

scale:



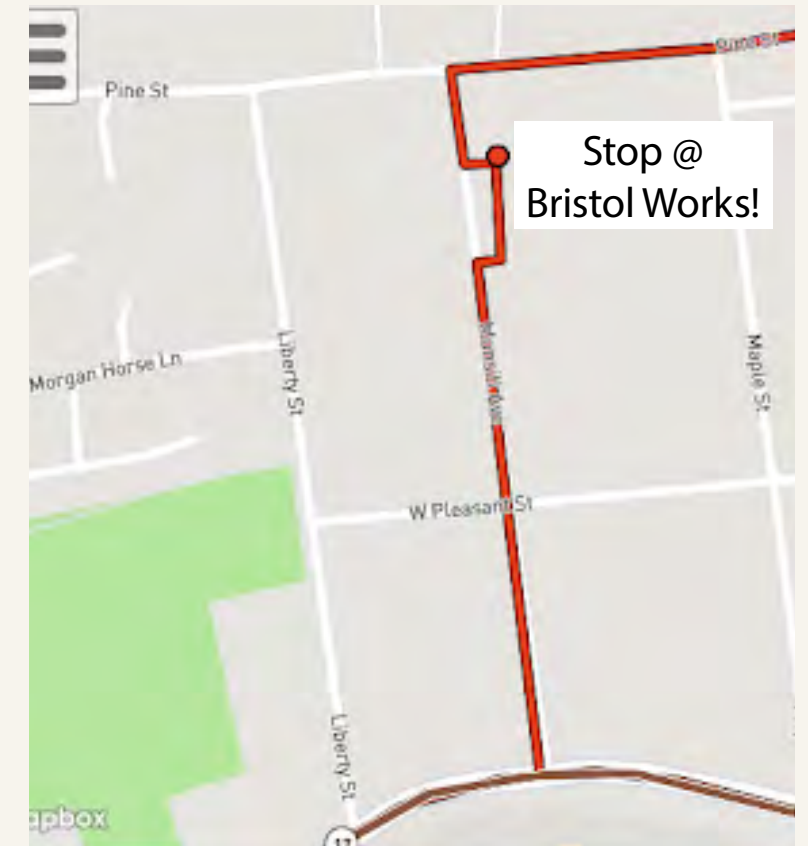
# Munsill & Context



# Activity



Bristol Works!  
Currently

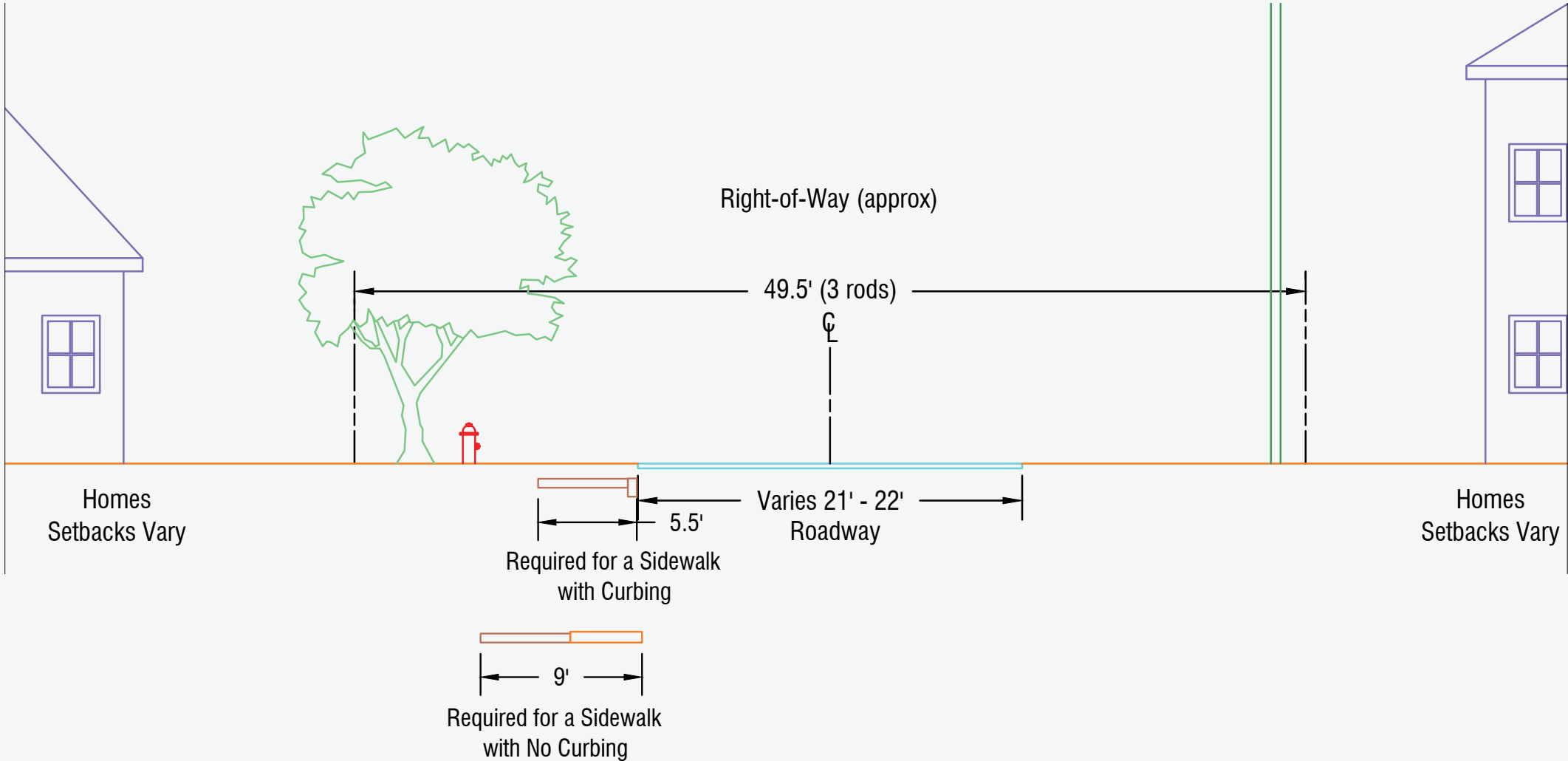


Tri-Valley Transit

Bristol Works!  
Envisioned



# Ideal Sidewalk Conditions



# Ideal Sidewalk Conditions



50 foot Right of Way  
(Approximate/Varies)

14 feet

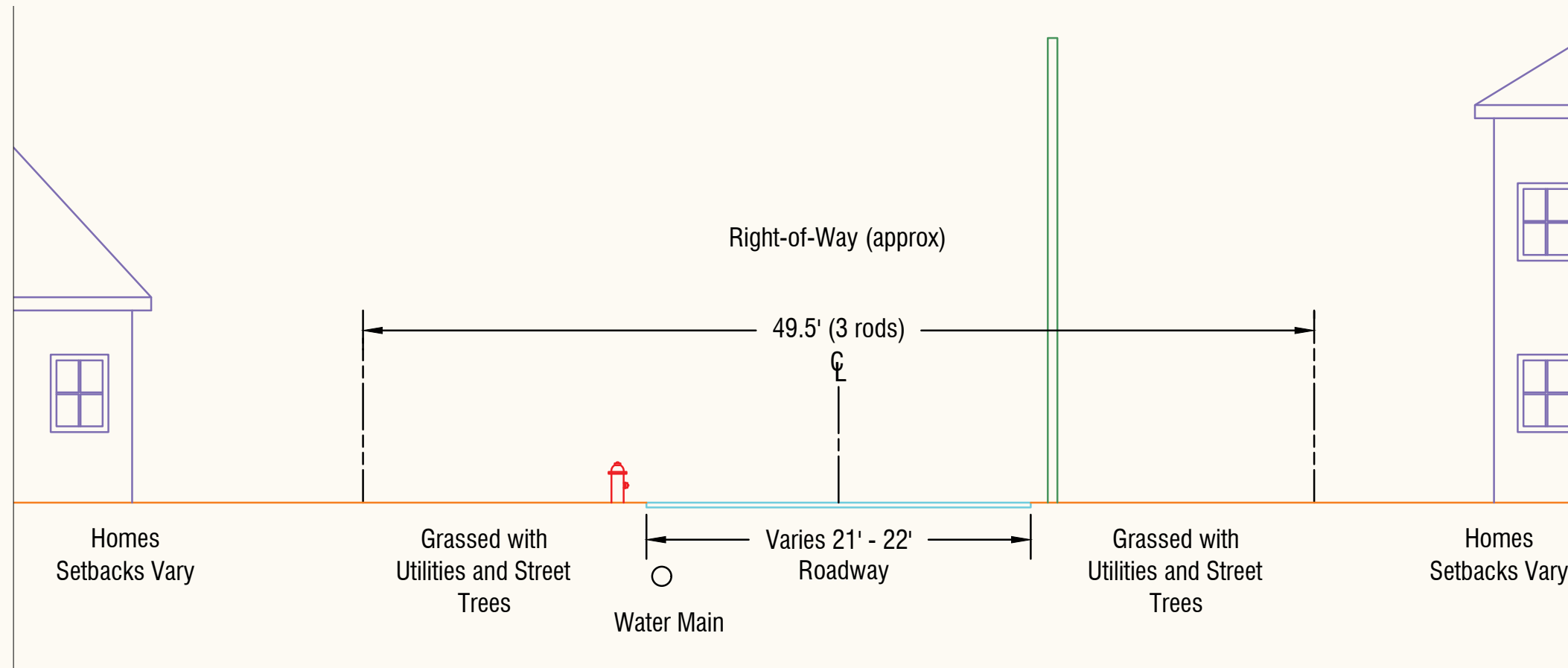
22 feet

14 feet



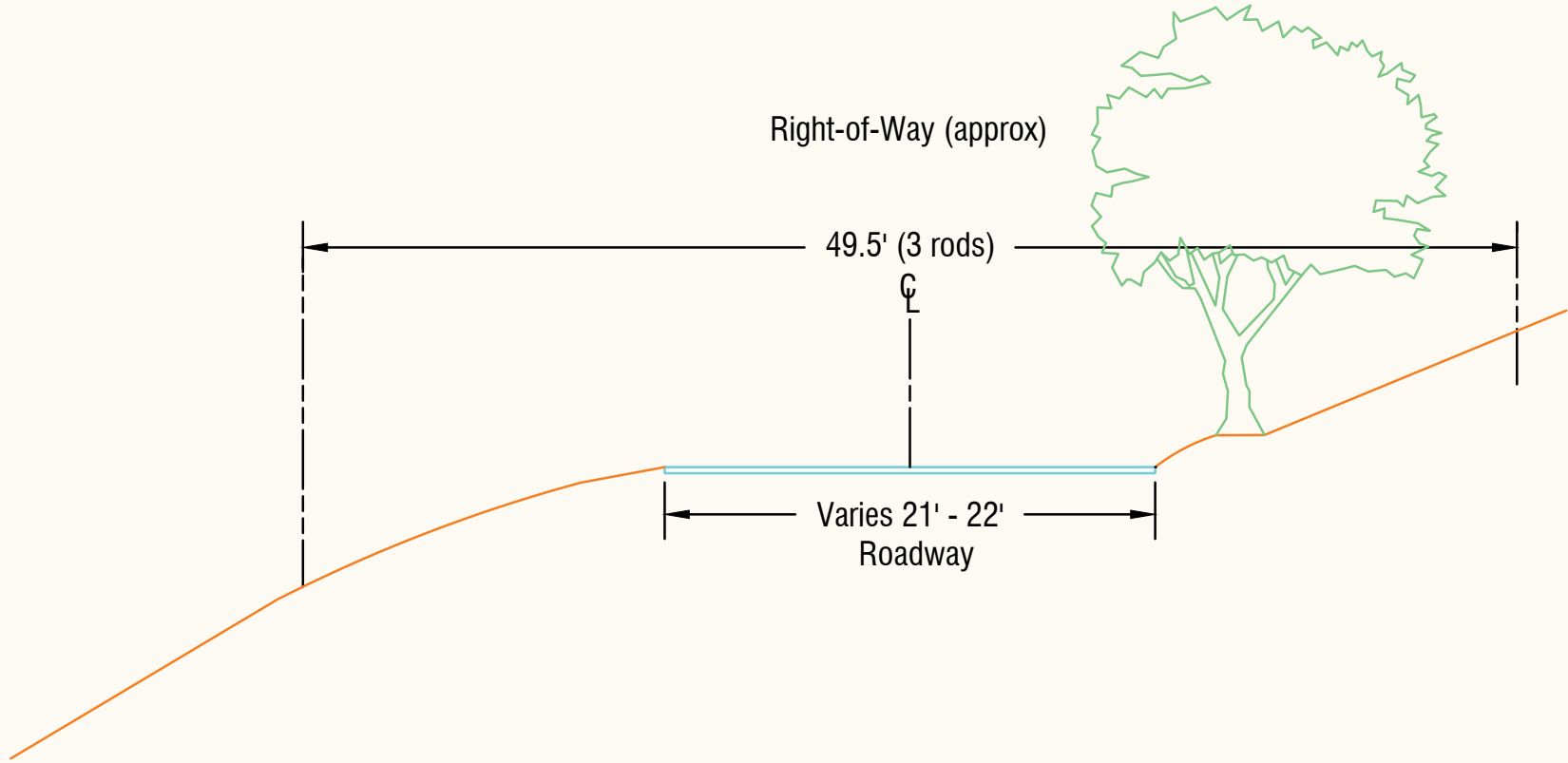
# Constraints

## Utilities



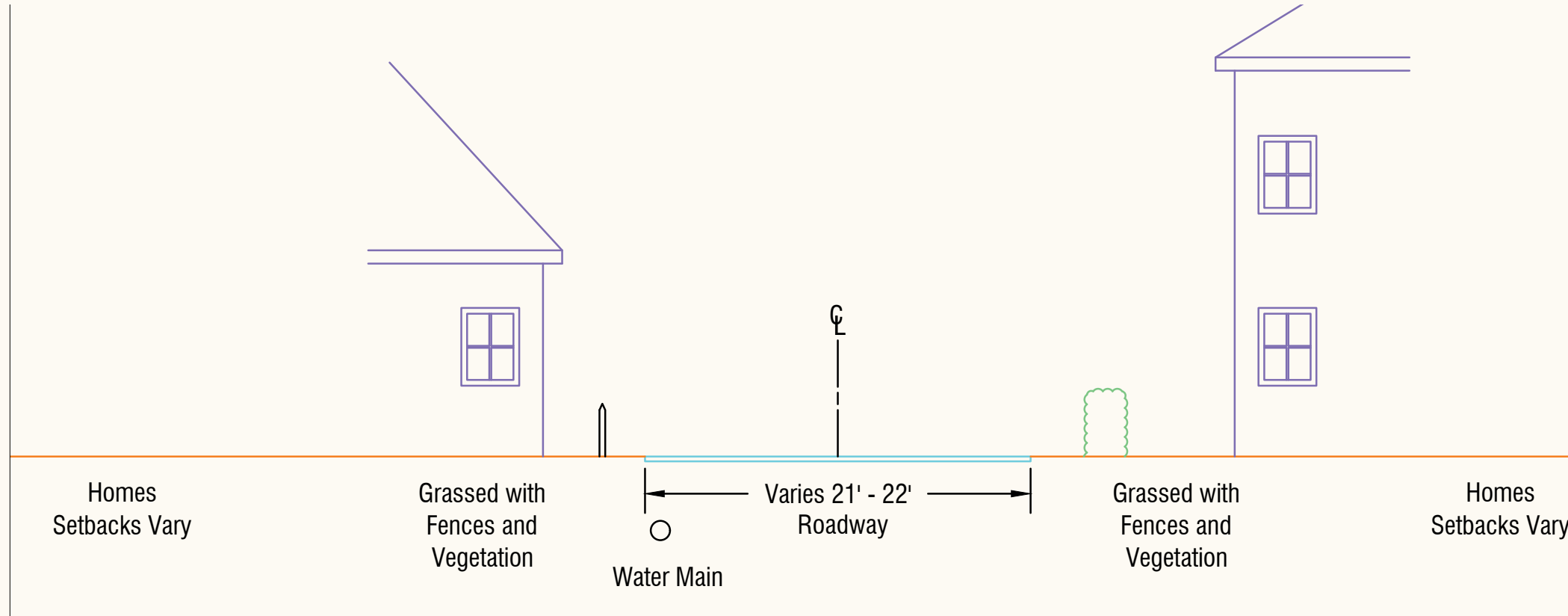
# Constraints

## Vegetation & Slopes



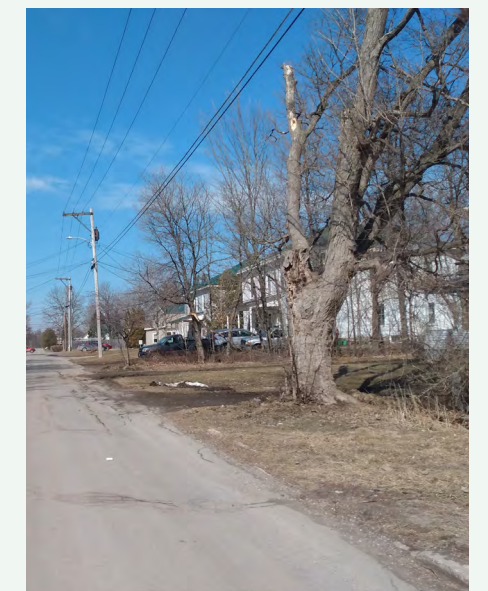
# Constraints

## Property Conflicts



# Constraints

## Trees



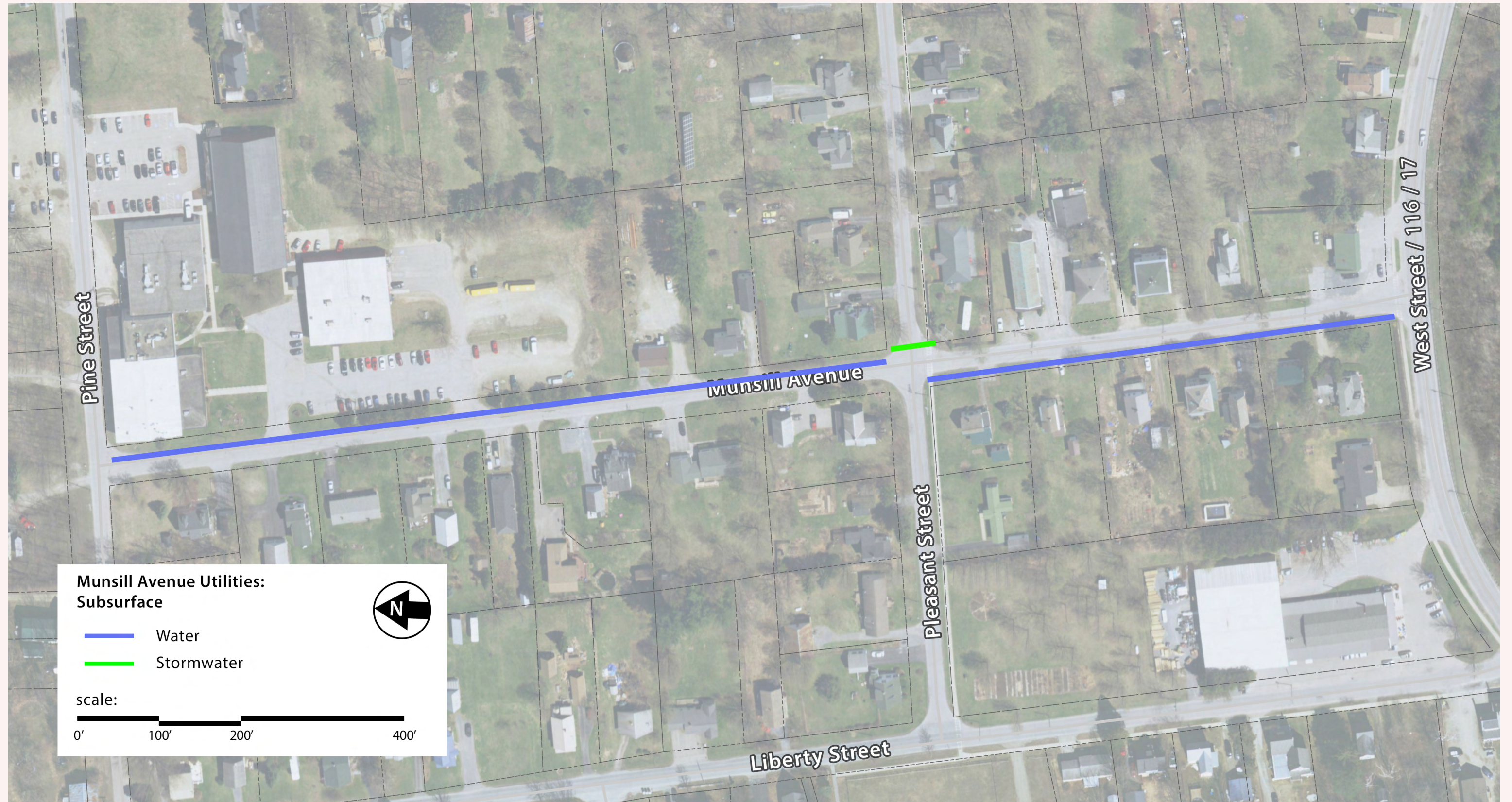
# Constraints

## Above-Ground Utilities and Other Structures



# Constraints

## Below-Ground Utilities



# More Corridor Conditions

## Topography and Right of Way

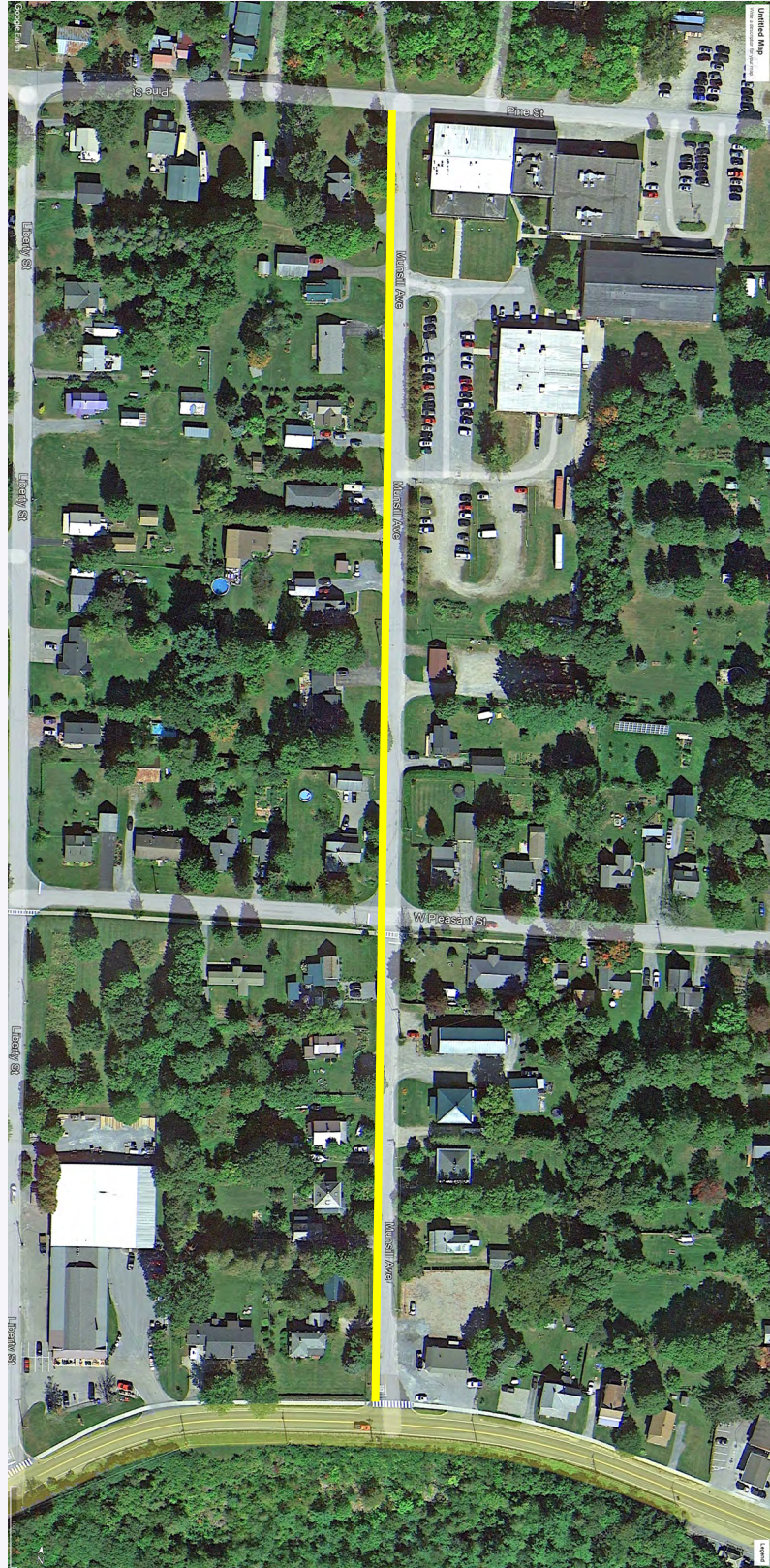


# This or That?

Sidewalk Side

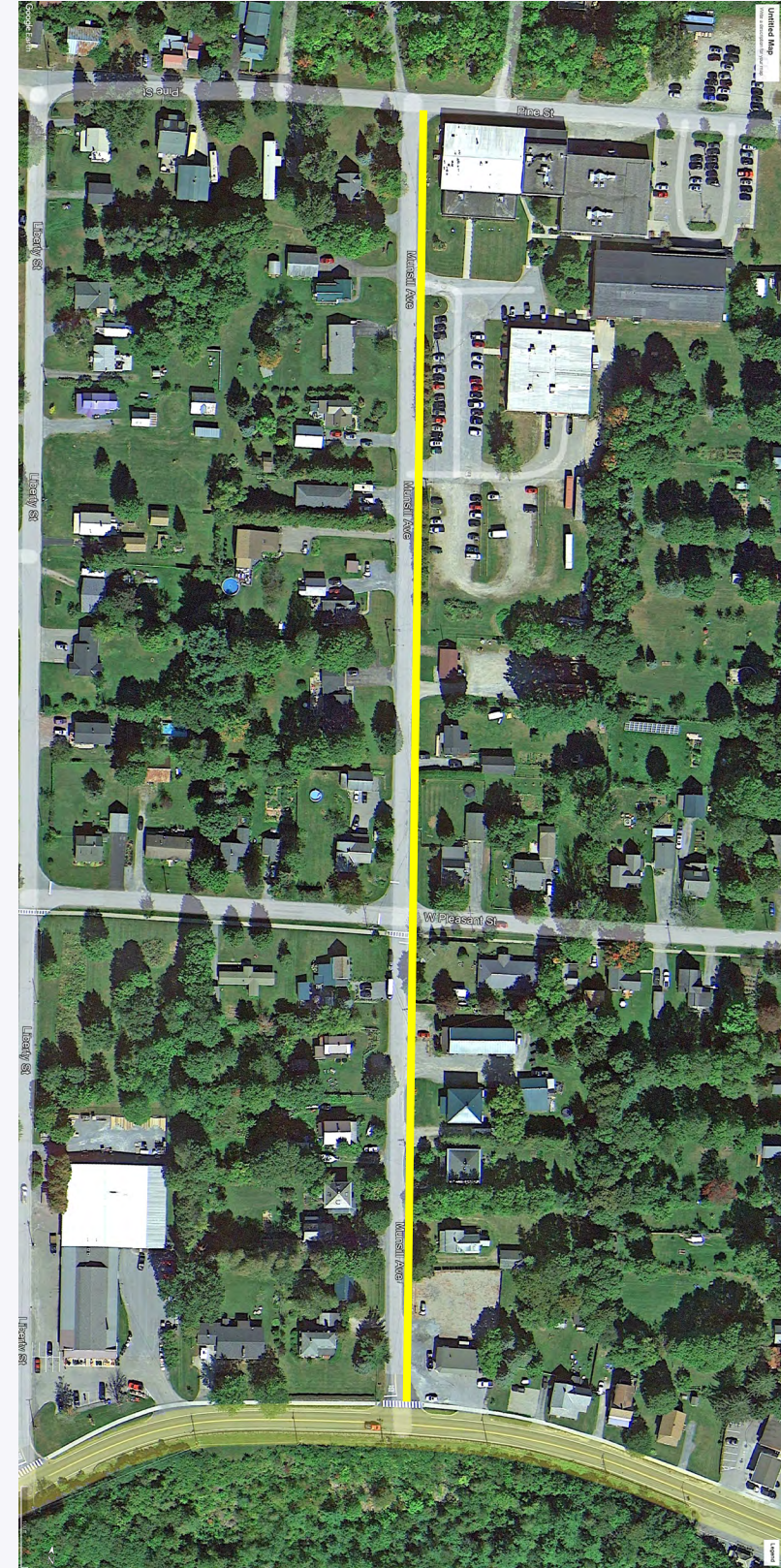
**West Side**

Toward  
**Mt. Abe**



**East Side**

Toward  
**Bristol Works!**





# This or That?

## Sidewalk Construction Options



**Sidewalk With a Grass Strip Buffer**



**Curbed Sidewalk - When Along Roadway**

# This or That?

## Sidewalk Construction Options



**Narrow Grass Strip Buffer (3 feet)**



**Wider Grass Strip Buffer (5+ feet) - Fits (Some) Trees**

# This or That?

## Sidewalk-Driveway Interface Options



**Sidewalk Continues Across Driveway**



**Sidewalk Stops at Driveway**

# This or That?

## Sidewalk-Driveway Interface Options



**Continuous Flat Across Driveway**



**Continuous Dipped At Driveway - Curbed Condition Only**

**Spread the word, take a survey!**

**[tinyurl.com/MunsillCSurvey](https://tinyurl.com/MunsillCSurvey)**

**Survey “live” through May 31st**



# Next Steps

- Public Survey Open: **5/4** through **5/31**
- Survey Results on Project Website Page: **6/15**
- Alternatives Development: **July - August**
- Alternatives Meeting: **September**
- Public Alternatives Survey: **September - October**
- Final Report: **Later in 2022**

# Bristol Munsill Avenue Sidewalk Scoping Study

Local Concerns Meeting

May 4, 2022

**THANK YOU!**

[tinyurl.com/MunsillStudy](https://tinyurl.com/MunsillStudy)

[tinyurl.com/MunsillLCSurvey](https://tinyurl.com/MunsillLCSurvey)

