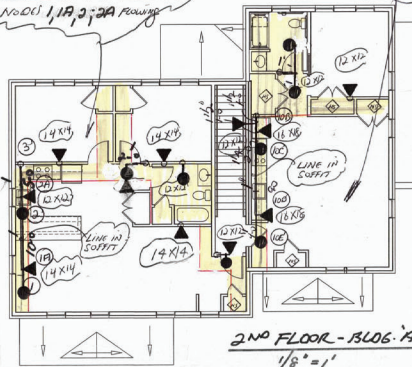


REMOTE CALL AREA
FIREHART 2-SOF (UNIT 15)
13R DESIGN
DEMAND @ 80% (NOOK 15)
70.1 GPM @ 69.7 PSI
NOOK 1, 1A, 2, 3A
FLOORING

REMOTE CALL AREA
FIREHART 3-SOF (UNIT 15)
13R DESIGN
DEMAND @ 80% (NOOK 15)
83.1 GPM @ 79.0 PSI
NOOK 10B, 10C, 10D, 10E



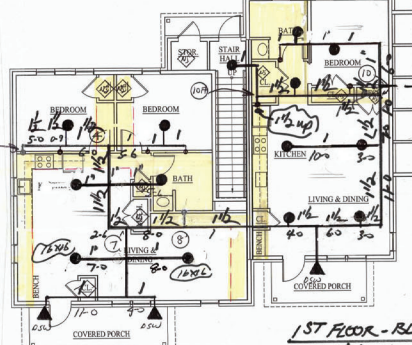
2ND FLOOR - BLDG. 'A'
1/8" = 1'

SPRINKLER LEGEND

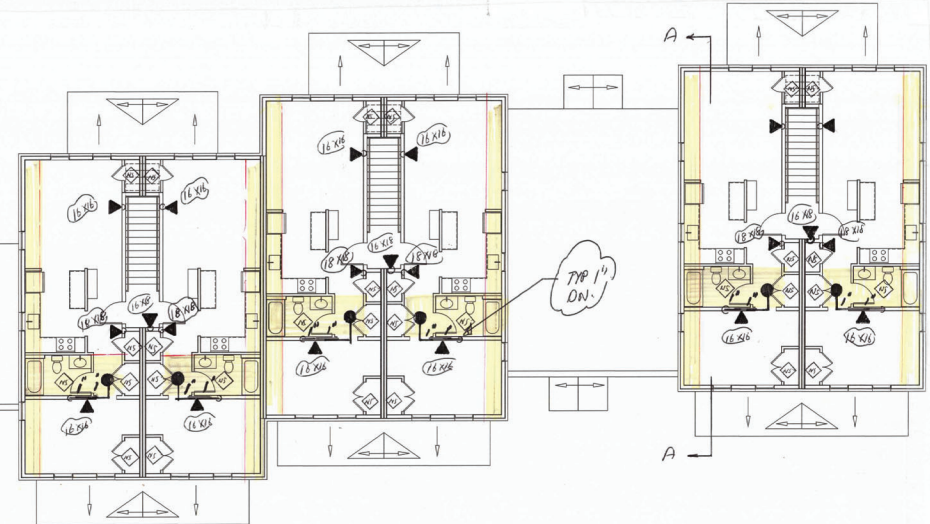
- RESIDENTIAL SIDEWALL, 16-4" 1/2", 151°F
SIP T12234 QTY = 35 (MAX 11'x16')
- RESIDENTIAL PENDENT, 16-4 1/2", 151°F
SIP T12234 QTY = 48 (MAX 11'x16')
- QUICK-RESPONSE SIDEWALL, 16-5 1/2", 155°F
SIP T13331 QTY = 2 (MAX 12'x12')
- DRY SIDEWALL QUICK-RESPONSE 16-5 1/2", 155°F
SIP T13331 QTY = 2 (MAX 12'x12')

TYP CL @ 9'-2"
TYP CORR @ 7'-6"
Δ = 20"

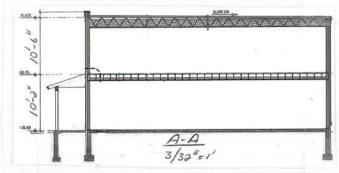
PIPING UNDERGROUND



1ST FLOOR - BLDG. 'A'
1/8" = 1'

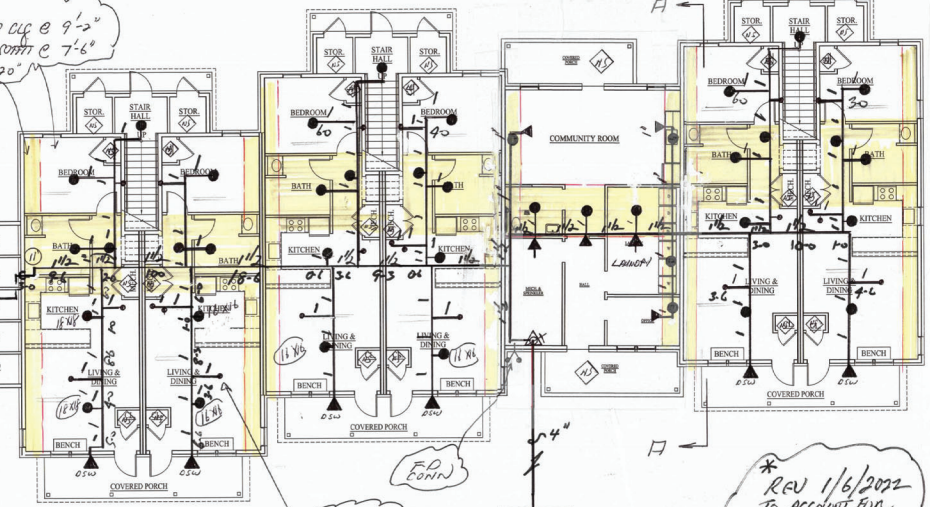


TYP 1"
DN.



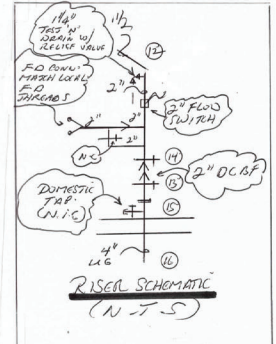
DESIGN NOTES

- (1) THIS IS A NFPA STD 13R-2013 DESIGN
- (2) CITY WATER AVAILABLE FOR DESIGN (TEST ON WEST STREET)
P_S = 115 P_R = 20 Q = 112.8 (DOMESTIC DEMAND 42 GPM)
* UPWARD FLOW RT'S ROUNDED
- (3) FILL PIPE IS CPVC
MECH. RM. PIPING IS STEEL
- (4) (a) CLOSETS ≤ 24" SQ TO BE NON-SPRINKLERED (8)
(b) BATHROOMS ≤ 55" SQ TO BE NON-SPRINKLERED
- (5) EXTERIOR STORAGE UNITS (17) TO BE NON-SPRINKLERED TOTAL PER NFPA 13R-2013 SEC. 6.6.7
- (6) ALL PIPE IS 1" U.N.O.
- (7) ○ - DENOTES 1" RISER (U.N.O)
- (8) ◇ - INDICATES AS NON-SPRINKLERED
- (9) ■ - INDICATES DROPPED CEILING @ 7'-6"
IF SHOWN IN COLOR



TYP 1" RISER TO 2ND FLOOR

* REV 1/6/2022 TO ACCOUNT FOR DROPPED SOFFITS



SPRINKLER HYDRAULIC SERVICES
180 Pharoa Drive
Williston, Vermont 05495
(802) 876-1988

MOUNTAIN VALLEY SPRINKLER, INC.
474 SHUNPIKE ROAD
WILLISTON, VERMONT 05495
(802) 865-3600

FIREHOUSE APARTMENTS - BLDG. 'A'
FIREHOUSE LANE
BRISTOL, VERMONT
FIRE PROTECTION-SPRINKLERS

PROJECT TITLE: FIREHOUSE APARTMENTS - BLDG. 'A'
PROJECT LOCATION: BRISTOL, VERMONT
DRAWING TITLE: FIRE PROTECTION-SPRINKLERS
SCALE: 1/8" = 1'
DRAWN BY: S.T.
DATE: 11/25/2021
DRAWING NO.: FP-1 OF 2R
©2021 SPRINKLER HYDRAULIC SVCS



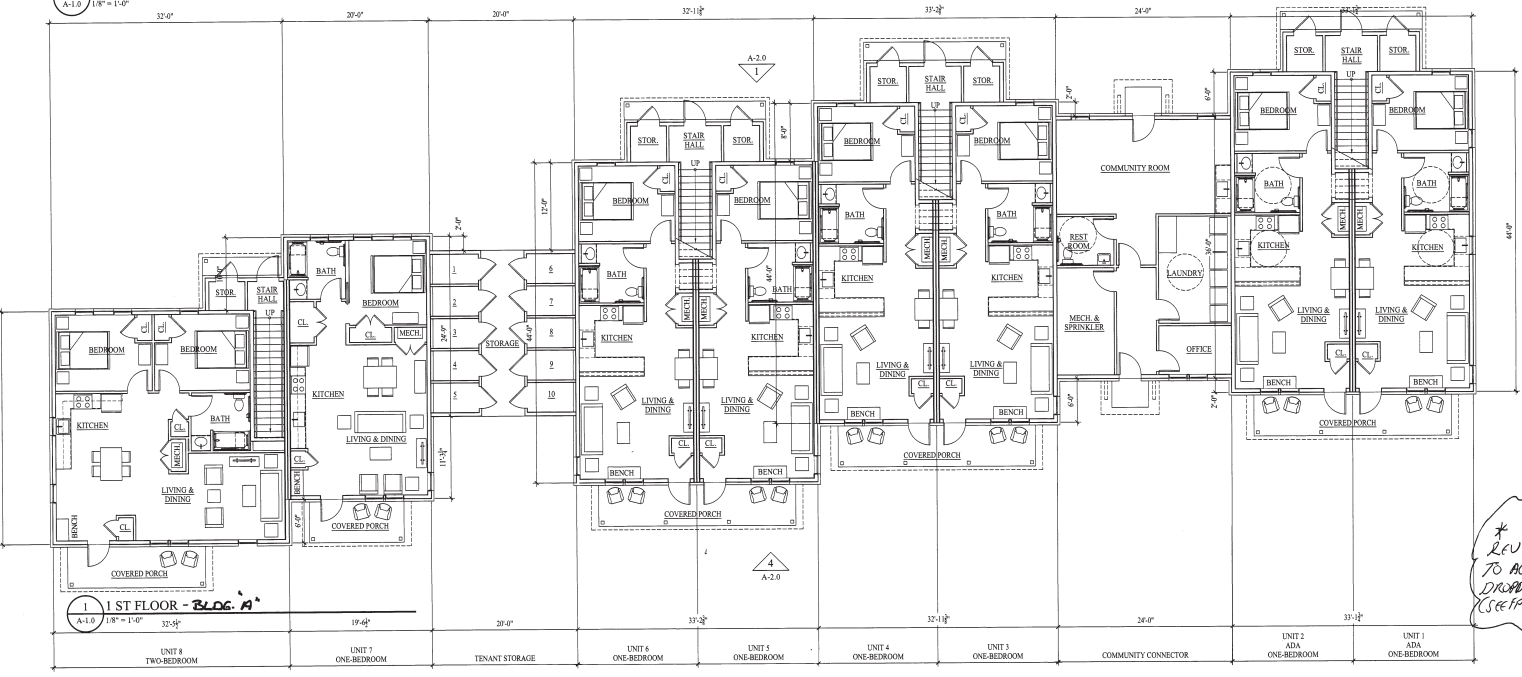
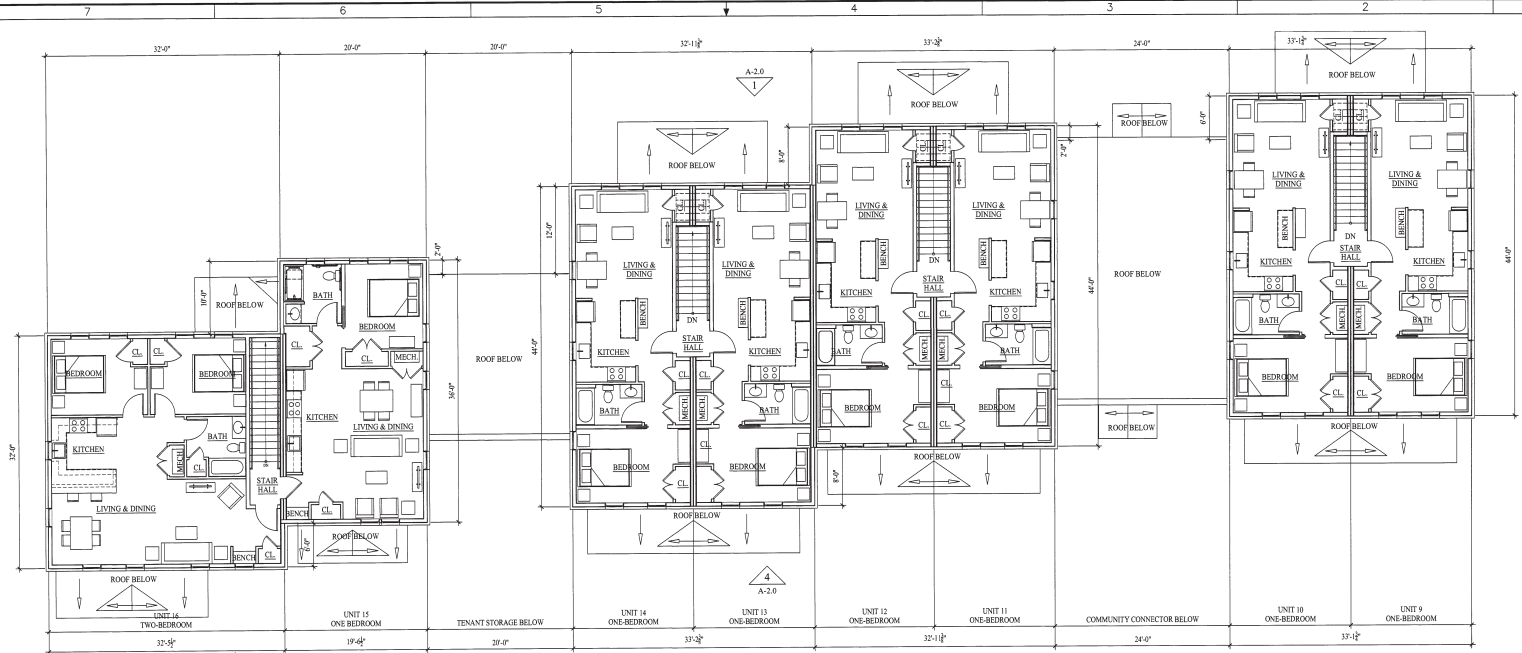
SPRINKLER HYDRAULIC SERVICES
 198 Sharon Drive
 Williston, Vermont 05495
 (802) 579-1928

MOUNTAIN VALLEY SPRINKLER, INC.
 474 SHUNPIKE ROAD
 WILLISTON, VERMONT 05495
 (802) 865-3800

FIREHOUSE APARTMENTS - BLDG. A
 FIREHOUSE LANE
 BRISTOL, VERMONT
 FIRE PROTECTION-SPRINKLERS

PROJECT TITLE: FIREHOUSE APARTMENTS - BLDG. A
 PROJECT LOCATION: BRISTOL, VERMONT
 DRAWING TITLE: FIRE PROTECTION-SPRINKLERS
 SCALE: 1/8" = 1'
 DRAWN BY: S.T.
 DATE: 11/25/2021
 DRAWING NO.: FP-2 OF 2R

©2021 SPRINKLER HYDRAULIC SVCS



** Rev 11/6/2021
 TO ACCOUNT FOR
 DRAWING DIFFERENCES
 (SEE FP-1 & 2)*