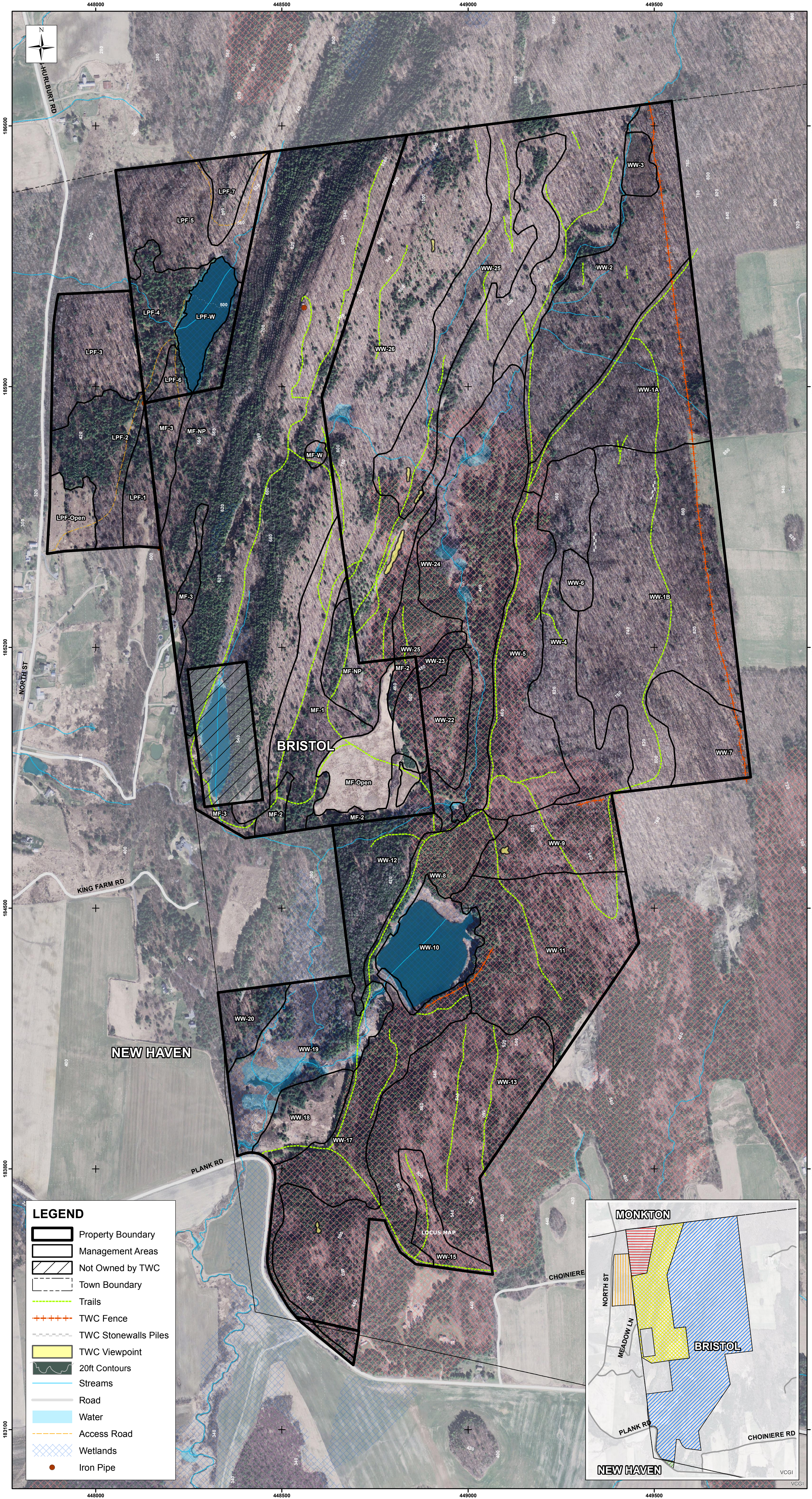


the Lands of the Watershed Center



USE VALUE APPRAISAL PROGRAM

Landowner: The Watershed Center
 Parcel: The Waterworks Property
 Town: Bristol
 Orthophoto #: 100184, 100180
 SPAN#: 093-029-11445

- Total Grand List acres in parcel: 664
- Actual acres to be excluded as measured on orthophoto: 0
- Acres to be enrolled (line 1 minus line 2): 664
- Acres to be enrolled according to map calculations: 664
- Factor to pro-rate acres (line 3 divided by line 4): 1.000

Area	Site	Type	Map Acres	Factor	Pro-Rated Acres
Productive Land:					
1A	I	RO-NH	26	1.000	26.0
1B	II	RO-NH	74.7	1.000	74.7
2	I	RO-NH	38.3	1.000	38.3
3	I	RO-NH	3.3	1.000	3.3
4	I	RO-NH	27.2	1.000	27.2
5	I	RO-NH	28.3	1.000	28.3
6	I	RO-NH	2.8	1.000	2.8
8	II & III	RO-NH	11.9	1.000	11.9
9	I & II	RO-NH	17.8	1.000	17.8
11	I & II	RO-NH	42.7	1.000	42.7
12	II-IV	H-NH	15.2	1.000	15.2
15	I	Miss M-A-H-O	6.6	1.000	6.6
21	I	RO-NH	1	1.000	1.0
Productive Map Acres:			295.8	Adjusted:	295.8
Non-Productive Land/Site IV:					
10	IV	Open Water	15	1.000	15.0
Non-Productive Map Acres:			15	Adjusted:	15.0
Conservation Land:					
7	I	RO-NH	13.9	1.000	13.9
13	III	Miss M-A-H-O	65.2	1.000	65.2
17	II-III	Valley Chestnut	24.7	1.000	24.7
18	II-III	Valley Chestnut	9.3	1.000	9.3
19	II-III	Shallow Em. Mar.	24.1	1.000	24.1
20	II-IV	H-NH	6.4	1.000	6.4
22	IV	Tree Black Line	8.2	1.000	8.2
23	II	RO-NH	2.1	1.000	2.1
24	IV	Shallow Em. Mar.	45.7	1.000	45.7
25	II-III	RO-NH	59.4	1.000	59.4
26	III-IV	Dry Oak-Hick	94	1.000	94.0
Non-Productive Map Acres:			353	Adjusted:	353.0
Total Map Acres:			664	Total Adjusted:	664
Enrolled Acres:			664		
Excluded Land:			0		
Total Grand List Acres:			664		

USE VALUE APPRAISAL PROGRAM

Landowner: The Watershed Center
 Parcel: The Waterworks Property
 Town: New Haven
 Orthophoto #: 100184, 100180
 SPAN#: 432-135-10944

- Total Grand List acres in parcel: 2
- Actual acres to be excluded as measured on orthophoto: 0
- Acres to be enrolled (line 1 minus line 2): 2
- Acres to be enrolled according to map calculations: 2
- Factor to pro-rate acres (line 3 divided by line 4): 1.000

Area	Site	Type	Map Acres	Factor	Pro-Rated Acres
Conservation Land:					
13	III	Miss M-A-H-O	1.4	1.000	1.4
17	II-III	Valley Chestnut	0.6	1.000	0.6
Non-Productive Map Acres:			2	Adjusted:	2.0
Total Map Acres:			2	Total Adjusted:	2
Enrolled Acres:			2		
Excluded Land:			0		
Total Grand List Acres:			2		

USE VALUE APPRAISAL PROGRAM

Landowner: The Watershed Center
 Town: Bristol, VT
 Orthophoto #: 100184
 SPAN#: 093-029-10710

- Total Grand List acres in parcel: 48.21
- Actual acres to be excluded as measured on orthophoto: 0.00
- Acres to be enrolled (line 1 minus line 2): 48.21
- Acres to be enrolled according to map calculations: 48.21
- Factor to pro-rate acres (line 3 divided by line 4): 0.993

Area	Site Type	Map Acres	Factor	Pro-Rated Acres	
(crop/pasture) (measured)					
Active Aground					
Open/Idle Aground	Pasture	0.00	0.993	0.00	
Subtotal:		0.00		0.00	
Productive Land: (forest type)					
4	Hardwood	9.57	0.993	9.50	
5	Northern Hardwood	18.53	0.993	18.39	
6	Sugar Maple-Hophornbeam	2.01	0.993	2.00	
Subtotal:		30.11		29.89	
Non-Productive Land/Site IV (determined by the 20% rule)					
W	Pond	8.56	0.993	8.50	
Subtotal:		8.56		8.50	
Non-Productive Land/Site IV (in excess of the 20% rule)					
NP	Wetland & Rockland	4.33	0.993	4.30	
7	Dry Oak-Hickory-Hopbeam Forest	5.57	0.993	5.51	
Subtotal:		9.90		9.81	
Total Map Acres:			48.57	Total Adjusted:	48.21
Enrolled Acres:			48.21		
Excluded Land:			0.00		
Total Grand List Acres:			48.21		

USE VALUE APPRAISAL PROGRAM

Landowner: The Watershed Center
 Town: New Haven, VT
 Orthophoto #: 100184
 SPAN#: 432-135-10830

- Total Grand List acres in parcel: 43.80
- Actual acres to be excluded as measured on orthophoto: 0.00
- Acres to be enrolled (line 1 minus line 2): 43.80
- Acres to be enrolled according to map calculations: 43.78
- Factor to pro-rate acres (line 3 divided by line 4): 1.000

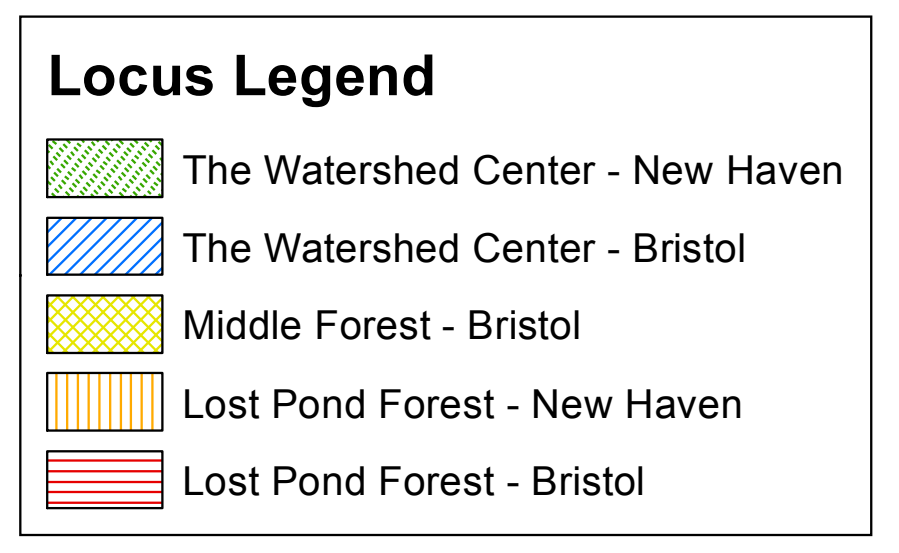
Area	Site Type	Map Acres	Factor	Pro-Rated Acres	
(crop/pasture) (measured)					
Active Aground					
Open/Idle Aground	Pasture	5.69	1.000	5.69	
Subtotal:		5.69		5.69	
Productive Land: (forest type)					
2	Sugar Maple-Hopbeam	6.00	1.000	6.00	
3	Miss Maple-Asp-Hickory Oak Forest	14.14	1.000	14.15	
4	Miss Red Oak-Northern Hardwood	17.95	1.000	17.96	
Subtotal:		38.09		38.11	
Total Map Acres:			43.78	Total Adjusted:	43.80
Enrolled Acres:			43.80		
Excluded Land:			0.00		
Total Grand List Acres:			43.80		

USE VALUE APPRAISAL PROGRAM

Parcel Name: The Middle Forest
 Landowner: The Watershed Center
 Town: Bristol, VT
 Orthophoto #: 100184
 SPAN#: 093-029-10078

- Total Grand List acres in parcel: 194.00
- Actual acres to be excluded as measured on orthophoto: 0.00
- Acres to be enrolled (line 1 minus line 2): 194.00
- Acres to be enrolled according to map calculations: 192.40
- Factor to pro-rate acres (line 3 divided by line 4): 1.064

Area	Type	Map Acres	Factor	Pro-Rated Acres	
(measured)					
Open Land: (NP - determined by 20% rule)					
MF-Open	Old Field	11.10	1.064	11.80	
Subtotal:		11.10		11.80	
Productive Land: (forest type)					
MF-1	Miss Maple-Asp-Hickory Oak Forest	21.80	1.064	23.19	
MF-2	Valley Chestnut Forest	8.60	1.064	9.15	
MF-3	Miss Maple-Asp-Hickory Oak Forest	11.90	1.064	12.66	
Subtotal:		42.30		44.99	
Non-Productive: (NP - in excess of 20% rule)					
MF-NP	Dry Oak Forest Types	139.30	1.064	148.16	
MF-W	Valley Chestnut - Wetland	0.80	1.064	0.85	
Subtotal:		140.10		149.01	
Total Map Enrolled Acres:			182.40	Total Adjusted:	194.00
Enrolled Acres:			194.00		
Excluded Land:			0.00		
Total Grand List Acres:			194.00		



This property is part of:
 Vermont Family Forests
 P.O. Box 254
 Bristol, VT, 05443
 www.familyforests.org
 (802) 453-7728
 © 2015 Vermont Family Forests

**Lost Pond Forest
 Bristol & New Haven, VT**

Bristol SPAN: 093-029-10710
 New Haven SPAN: 432-135-10830
 Orthophoto #: 100184
 Bristol: 48.21 acres
 New Haven: 43.8 acres

NOTES
 Vermont Orthophotos: 100184
 Tics in NAD 83 State Plane Meters
 This map is not a survey.
 All boundaries are provisional.
 Field data collected by: David Brynn
 VFF Conservation Forester, March 2015
 GIS map produced by: E. Callie Brynn,
 VFF Conservation Mapping Specialist, March 2015

