

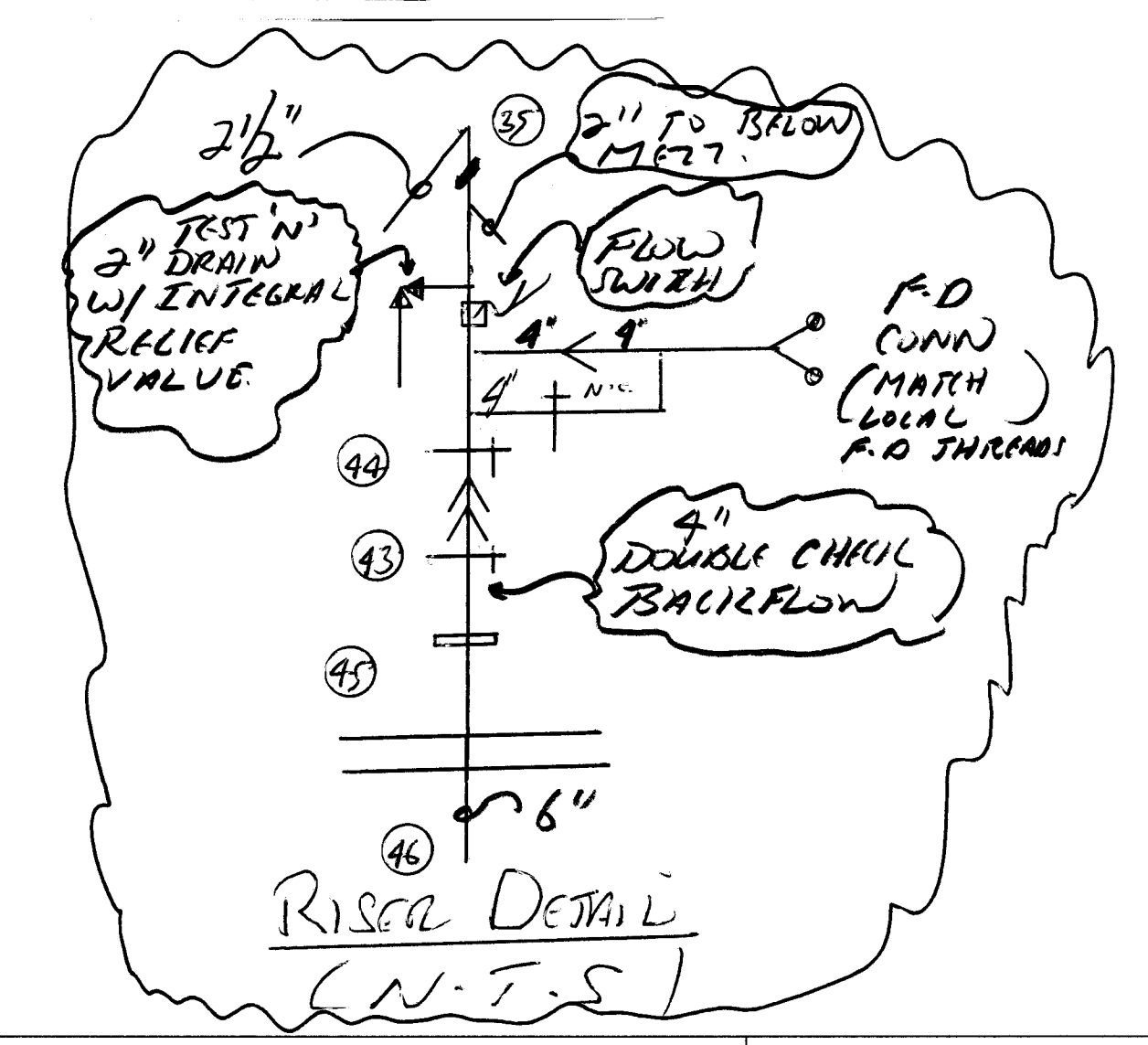
REPTD CALC AREA
SHILLAISDF
20/1500+250
(OH GP. 2)
DEMAND @
150% (NODE 45)
318.9 GPM
54.8 PST

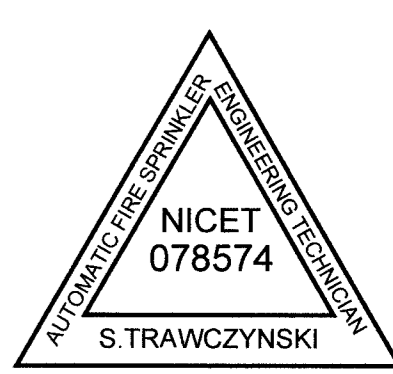
SPRINKLER LEGEND
○ - UPRIGHT, QUICK-RESPONSE, IC=56, 1 1/2", 155°F
SIN 1133*, MAX 130#, QTY=190
● - PENDANT, QUICK-RESPONSE, IC=56, 1 1/2", 155°F
SIN 1133* MAX 130#, QTY=10 * ON EQUAL

CEILING SYSTEM - 1 1/2" = 1'

DESIGN NOTES
(1) SYSTEM IS A WET PIPE HYDRAULICALLY DESIGNED INSTALLATION PER NFPA 13-2013
(2) SYSTEM IS DESIGNED FOR OH GP2 OCCUPANCY: 20/1500+250
(3) CITY WATER AVAILABLE FOR DESIGN:
P_S=115 P_R=20 Q=1128 (TEST ON WEST STREET)
DATE UNK.
(4) ALL PIPE IS SCH 40/10 BLACK STEEL

MEZZANINE - 1 1/2" = 1'





SPRINKLER HYDRAULIC SERVICES
 198 Shrewsbury Drive
 Williston, Vermont 05495
 (802) 876-1926

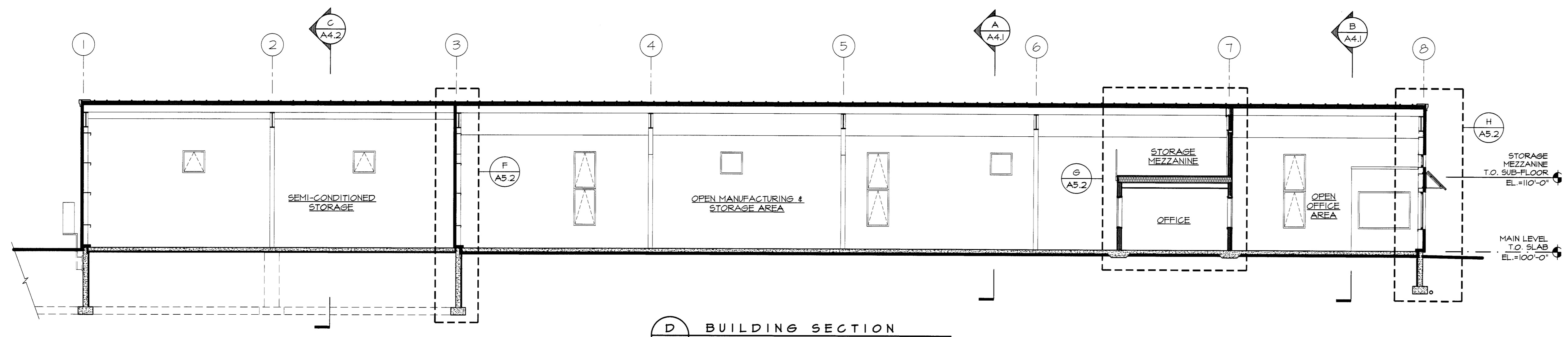
MOUNTAIN VALLEY SPRINKLER, INC.
 474 SHUNPIKE ROAD
 WILLISTON, VERMONT 05495
 (802) 865-3600

PROJECT TITLE: STONEY HILL-BUILDING A
 PROJECT LOCATION: BRISTOL, VERMONT
 DRAWING TITLE: FIRE PROTECTION-SPRINKLERS

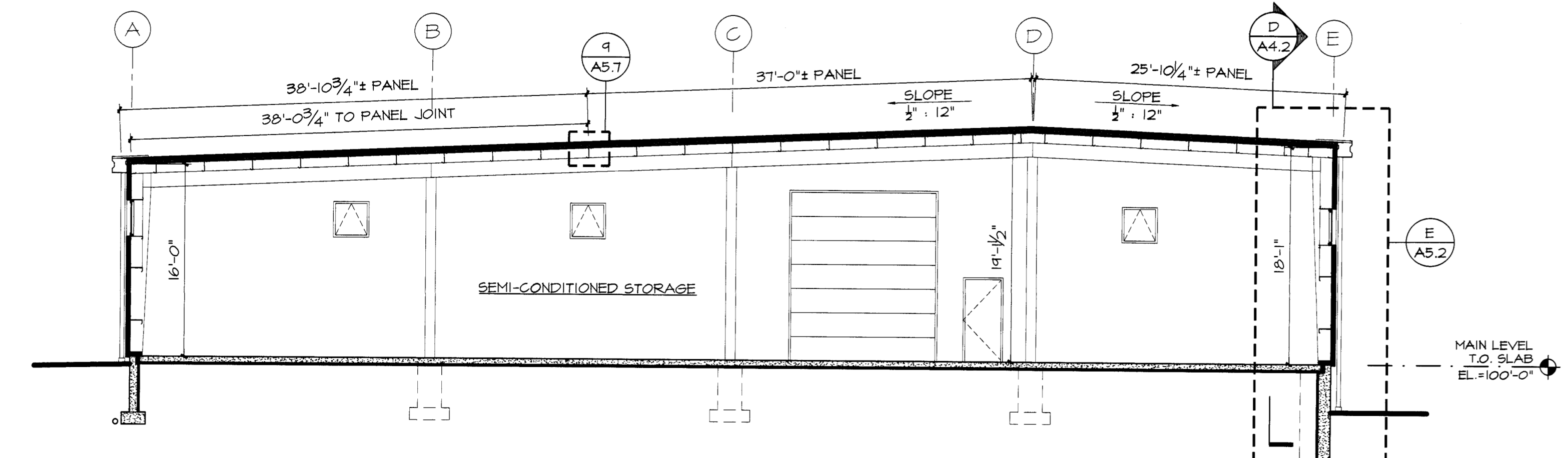
SCALE: 1/8" = 1'-0"
 DRAWN BY: S.T.
 DATE: 3/8/2013
 DRAWING NO.:

FP-2 OF 2

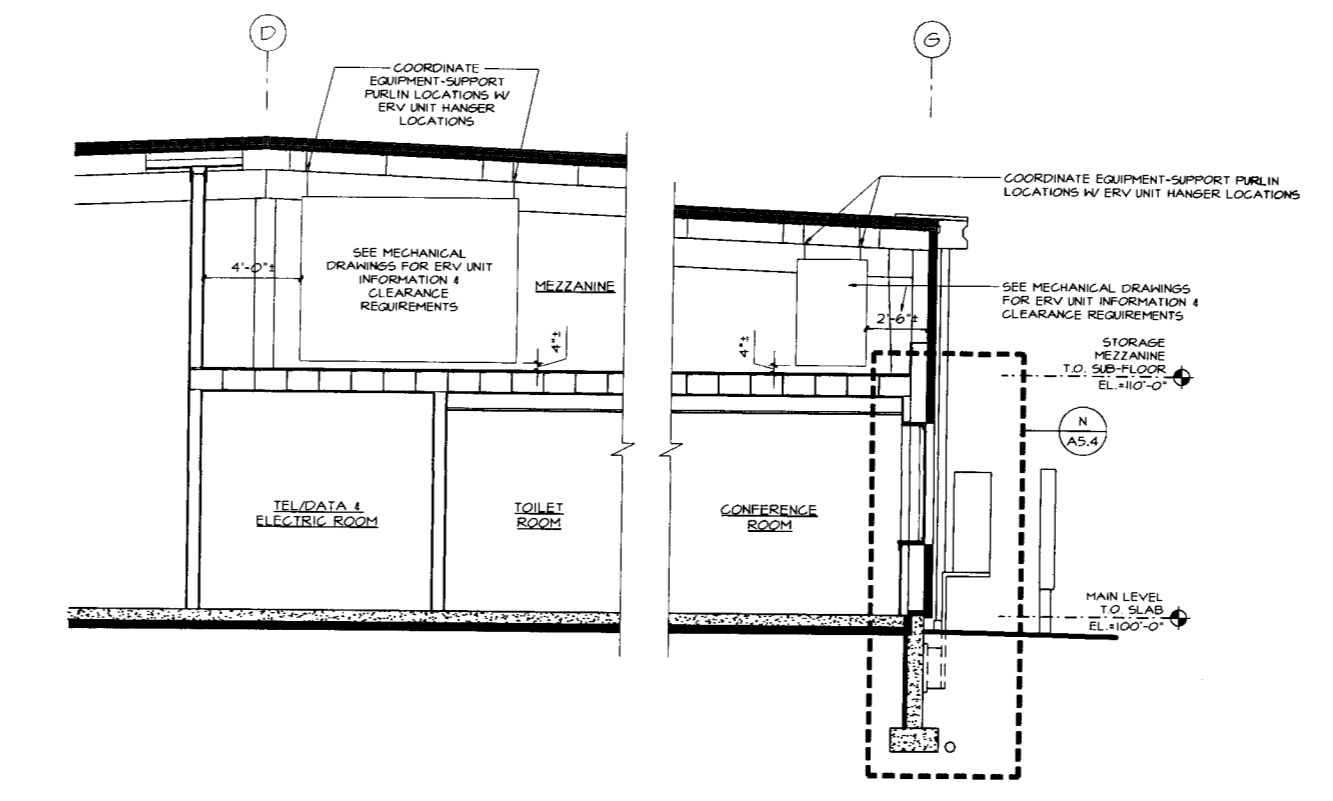
©2005 SPRINKLER HYDRAULIC SVCS



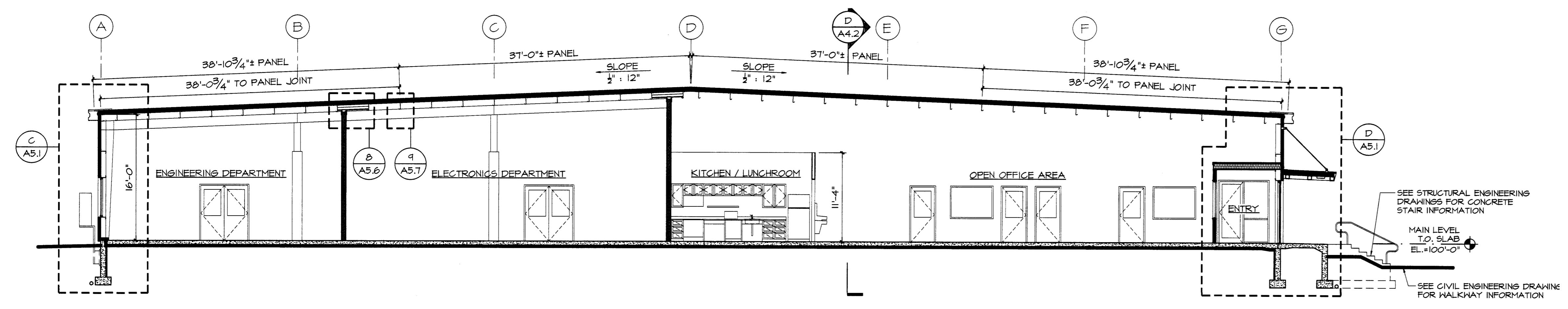
D BUILDING SECTION
 A4.2 SCALE 1/8" = 1'-0"



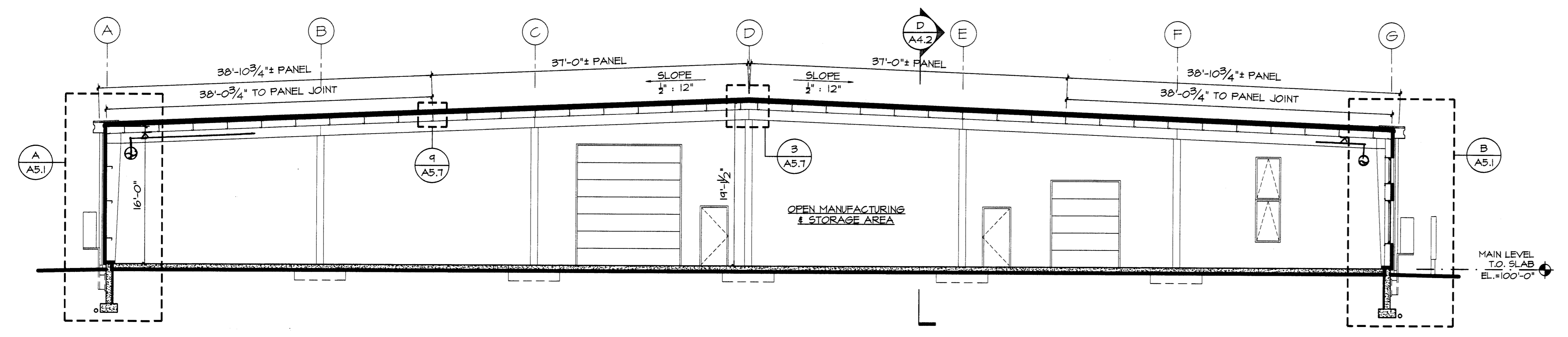
C BUILDING SECTION
 A4.2 SCALE 1/8" = 1'-0"



E PARTIAL BUILDING SECTION
 A4.1 SCALE 1/4" = 1'-0"



B BUILDING SECTION
 A4.1 SCALE 1/8" = 1'-0"



A BUILDING SECTION
 A4.1 SCALE 1/8" = 1'-0"