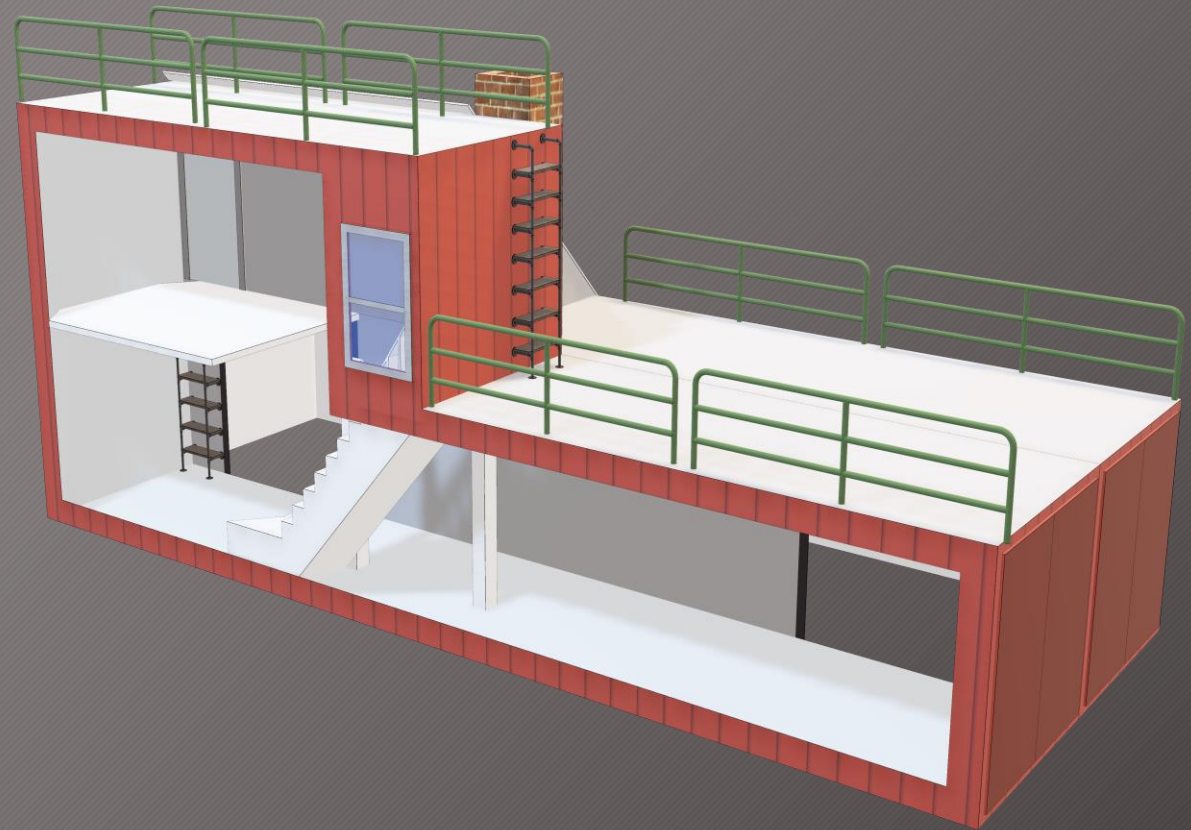


BFD CONEX BOX TRAINING STRUCTURE

OVERVIEW

The creation of a training structure using Conex boxes will provide BFD with a great opportunity to improve our department.



FEATURES

- Roof Venting
- Chimney Prop
- Forcible Entry
- Ladders
- Window Bailout
- Search and Rescue
- Ceiling



FEATURES (cont.)

- Live Smoke (Not Fire)
- Confined Space
- PAC Course
- Entanglement
- Wall Breach
- Basement Simulation



FEATURES (cont.)

- Window Bailout
- FD Connection
- RIT
- Tool Hoists
- Victim Removals
(Ladder, Drags)
- Radio Communications



ADVANTAGES

- On site
- More affordable than VFA
- Self-contained
- Better training
- Expanded training offerings
- Real life situation
- Better communications
- Recruitment tool
- Revenue stream



CHALLENGES

- Money
- Permitting
- Location
- Appearance
- Maintenance
- Town Approval
- NFPA Standards



COSTS

• 3 Boxes (2 40', 1 20')	\$12,000
• Site Prep	\$1,000
• Steel (Roof Frame, Door prop)	\$2,000
• Wood (Stairs,	\$2,500
• Shop Supplies	\$700
• Cargo Bars	\$500
• Chimney Prop	\$300
• Misc.	\$1,000
• TOTAL	\$20,000



CONCLUSION

This project will take about a year to complete. We need the support of the Selectboard to move this forward. We ask for your approval to construct this training structure on the Fire Station property.

Questions?

