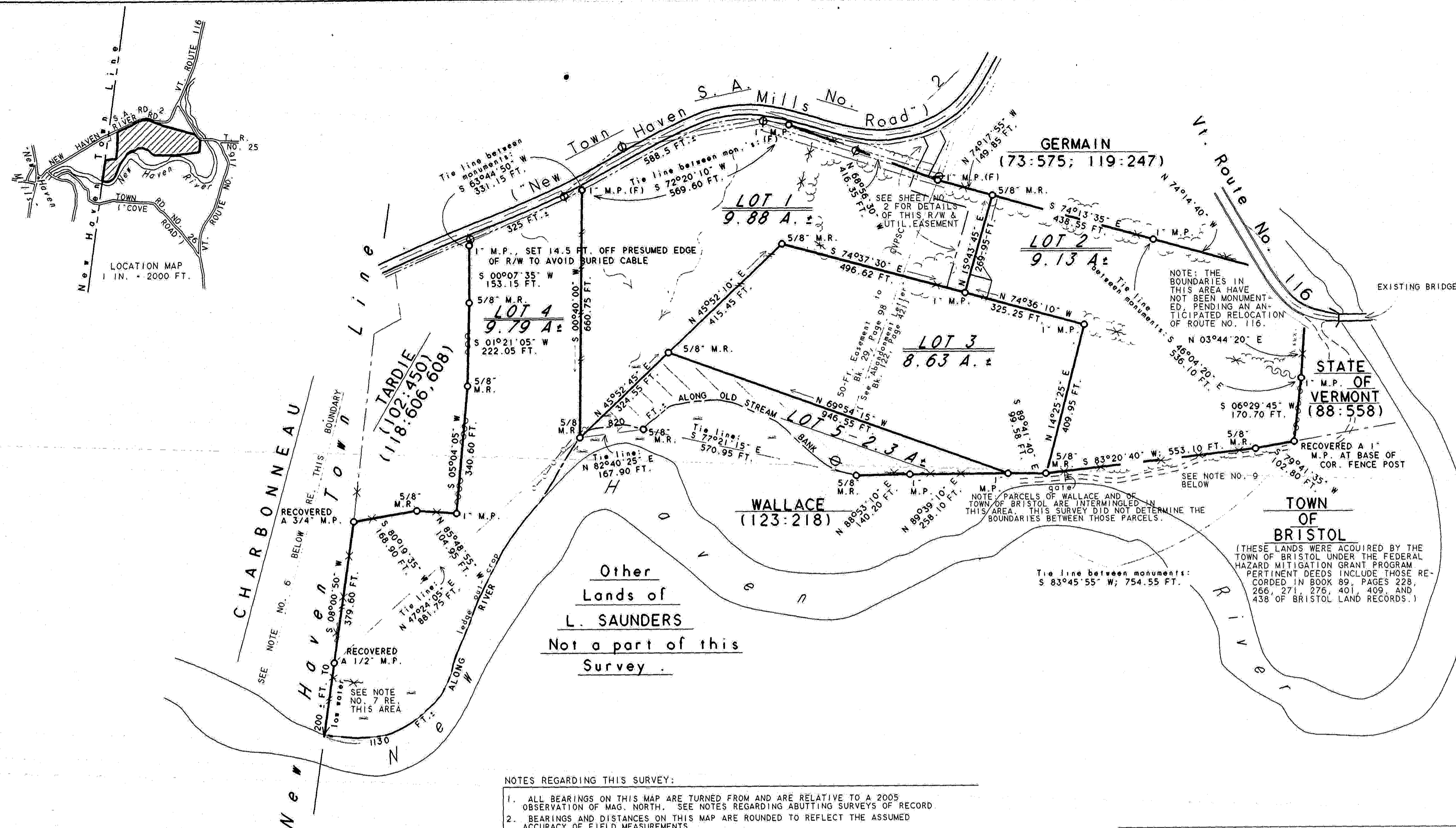


Ch. J. J. J.



LEGEND:

BOUNDARY MONUMENT	M.P. - METAL PIPE (DIAM. MEASURED INSIDE)
	M.R. - METAL ROD
	(F) - SET FLUSH TO THE GROUND
	ALL MONUMENTS WERE SET FOR THIS SURVEY UNLESS OTHERWISE NOTED.
BOUNDARY LINE	(SOME IRREGULAR BOUNDARIES ARE LABELED WITH DIFFERENT MARKINGS)
EASEMENT LINE OR SYMBOL	blazed line on trees
PAVED ROADWAY	
SEASONAL ROAD, TRAIL	
BARBED WIRE FENCE, TRACES	
WOVEN WIRE FENCE, TRACES	
ELECTRIC FENCE, AS PRESENTLY MAINTAINED	
HEDGEROW, EDGE OF WOODS	
SWAMP LAND, POORLY DRAINED LAND, SWALE	

Sheet No. 1 of 3 Sheets of A Survey Map of A Subdivision of Portions of LEE W. SAUNDERS LANDS Bristol, Vermont

Scale: 1 in. = 200 Ft. (1 CM. = 12 M.)

NOTE: SHEET 1 OF THIS MAP WAS PREPARED IN ACCORDANCE WITH 27 VSA 1403. IT IS BASED ON A SURVEY OF THOSE LANDS PREVIOUSLY DESCRIBED AS PARCEL NO. 1 IN A WARRANTY DEED FROM CARL J. ALDRICH TO WILLIAM & BERYL SAUNDERS AS RECORDED IN BRISTOL LAND RECORDS BOOK 38, PAGE 168. REFERENCE DEED: LEE W. SAUNDERS FROM WM & BERYL SAUNDERS BOOK 65, PAGE 277. EXTERIOR BOUNDARIES ON THIS MAP ARE DRAWN FROM A PREVIOUS MAP ENTITLED "A Survey Map of a Portion of Lands of LEE W. SAUNDERS, Bristol, Vermont" AS PREPARED BY ME, BEARING A MAP COMPLETION DATE OF 20 OCTOBER 2005 AND RECORDED IN BRISTOL MAP FILES AS NO. 330, HANGER 53. SUBDIVISION BOUNDARIES HAVE BEEN SET BY DIRECTION. SEE SHEET NO. 2 OF THIS SURVEY FOR DETAILS OF THE PERTINENT ACCESS ROAD AND RELATED EASEMENTS.

SEE SHEET NO. 3 OF THIS SURVEY MAP FOR PROPOSED IN-GROUND WASTE WATER SYSTEMS, DRILLED WELLS AND OTHER RESIDENTIAL IMPROVEMENTS. THAT SHEET WAS PLOTTED FROM PLANS PREPARED BY LINCOLN APPLIED GEOLOGY, INC. THOSE PROPOSED IMPROVEMENTS ARE NOT A PART OF THIS SURVEY. SEE ADDITIONAL NOTES ON THE MAP REGARDING THIS SURVEY.

Completion of Field Surveys: 30 November 2006
Map Completion: 29 May 2007

Kenneth G. Weston
Surveying Services, Inc.
1028 Corliss Road
Bristol, Vermont 05443
CADD6\MAPS\SAUNDERS2

Kenneth G. Weston, L.S.

Received for record June 14, 2007 at 3:06 pm. Attest: Therese Kirby, Clerk