



## Town of Bristol

1 South Street  
P.O. Box 249  
Bristol, VT 05443  
(802) 453-2410  
[www.bristolvt.org](http://www.bristolvt.org)

### Town of Bristol Recreation Department REQUEST FOR PROPOSALS BRISTOL SKATEPARK PROJECT

The Bristol Recreation Department is requesting proposals from qualified engineering firms or design teams for design services to develop plans for replacement of the skatepark at 110 Airport Drive in Bristol (hereinafter referred to as “Project”). The project includes complete design services (including community design workshops, conceptual designs, final plans and specifications), cost estimates, state and local permit assistance, and construction documents.

**The Bristol Skatepark Project aims to build a sustainable, low-maintenance skatepark that serves the community as an inclusive and accessible recreational space, welcoming users of all ability levels to play, learn, and grow.**

#### **Background**

Bristol is a vibrant and dynamic community of around 3,800 people located in Addison County in Central Vermont. Bordered by the New Haven River, Green Mountain National Forest, and Champlain Valley’s farms and fields, Bristol is just minutes from surrounding four-season outdoor recreation opportunities such as hiking, biking, fishing, and kayaking.



Sitting at the western foot of the Green Mountains, the former Bristol Village is on a plateau and consists of around one square mile of residences, community resources, and businesses. It is also a Vermont Designated Downtown, a designation earned in 2006. Bristol is a town where long-standing generations of families blend with newer residents who have moved to the area to raise families in a charming rural village setting. The area is popular for tourism and boasts hikes, swimming holes, camping, mountain biking, great food, and local art.

### **Location**

The existing approximately 8,500-square-foot skatepark is located on a flat recreation field at the west end of the village off of West Street and adjacent to the Mount Abraham Union High School. The field includes the Bristol Hub Teen Center, a pavilion, trees, garden beds, and sheds. The non-profit group Bristol Recreation Club owns the field and endorses this project. There is a parking lot on the north end of the field. The field is part of the larger “Bristol Recreation Club Fields,” which includes several multi-use fields for soccer, baseball, lacrosse, field hockey, a tennis court, and a pump track.



The existing skatepark, made of asphalt, wood, steel, and skatelite, will be demolished and replaced with the new skatepark. The current park, dating back to around 2000, has served the community well, and the community is excited about the opportunity for a new park. The design should focus on beginner and intermediate levels and accommodate skateboards, scooters, and BMX bikes. We aim to incorporate several existing components from the current park into the new design, enhancing them and

ensuring they flow well with the overall park.

The new skatepark should be between 9,000 and 12,000 square feet, constructed of cast-in-place and shotcrete concrete. We are looking for multiple skatepark areas so users can practice uninterrupted, particularly ensuring advanced riders have runs uninterrupted by younger users or beginners.

(See attached map of Bristol, p.6.)

### **Scope of Services**

The Bristol Recreation Department seeks a company to facilitate community design workshops and incorporate that feedback into a conceptual design, final plans, and specifications. The final design should have options for breaking up construction into different stages to accommodate fundraising timelines while improving the skatepark. The selected company will also be responsible for providing an engineering cost estimate, construction surveying, environmental

documents, contract documents for bidding, and any other necessary work to complete the project.

The design should primarily focus on skateboarding while also accommodating various types of wheels used in the park, such as scooters, BMX bikes, strider bikes, and mountain bikes. We aim to prioritize inclusivity and celebrate the park as a community space where everyone is welcome, whether they are riding the features or cheering others on.



Additionally, the design should include a paved path connecting the skatepark to the sidewalk beside West Street and an extension of the sidewalk in front of the Hub to enhance accessibility. We envision the skatepark as a beautiful addition to the landscape, one that is welcoming and captures the natural beauty of the area.

The engineering/design team should seek to incorporate local history, art, or other cultural elements into the design to reflect the unique identity of Bristol.

### **Funding Sources**

This design process will be funded through an allocation from Bristol's share of the American Rescue Plan Act (ARPA) funds. Funds for construction of a new skatepark have not yet been secured but will be sought through a combination of grants, fundraising, donations, in-kind contributions, or other sources.

### **Examples of existing skateparks that we are inspired by**

Thanks to the collaboration with residents, below are a couple images of existing skateparks superimposed on the Rec Fields location to serve as inspiration for the community. These parks



were designed by the talented teams listed on the images and in no way associated with The Town of Bristol or the Bristol Skatepark Project. We just borrowed their likeness to offer visualization tools for the community.

Other Skateparks we are inspired by:

- [Manchester Skatepark in Manchester, VT](#)
- [A Dog skatepark in Burlington, VT](#)
- [Guppey Park Skatepark in Dover, NH](#)
- [Portsmouth Skatepark in Portsmouth, NH](#)

### **Submission Requirements**

Proposals must include the following components:

1. **Firm's Experience:**
  - A brief description of relevant projects completed by the firm, particularly those similar in scope and size to the Bristol Skatepark Project.
2. **Project Team:**
  - Key personnel involved in the project, including their qualifications and roles. Please include resumes or CVs highlighting relevant experience.
3. **Design Approach:**
  - A preliminary design concept or approach based on the RFP, including initial thoughts incorporating existing skatepark elements, ensuring inclusivity, and meeting the community's needs.
4. **Timeline:**
  - A proposed timeline for completing the design services, with key milestones and deliverables.
5. **Cost Proposal:**
  - A detailed breakdown of costs for each phase of the project, including design, community engagement, and any additional services.

### **Evaluation Criteria**

Proposals will be evaluated based on the following criteria:

1. **Relevant Experience (30%):**
  - The firm's past experience with similar projects, particularly in skatepark design and community engagement.
2. **Design Approach (25%):**
  - The quality and creativity of the firm's proposed design approach, including alignment with the project's goals of inclusivity, accessibility, and community integration.
3. **Community Engagement (20%):**
  - The firm's experience and proposed methods for conducting effective community workshops and incorporating public feedback into the final design.

**4. Cost-Effectiveness (15%):**

- The proposed budget in relation to the project's goals and the overall value offered.

**5. Timeline (10%):**

- The ability to meet the proposed schedule and deliver the project on time.

**Sustainability**

The Town of Bristol encourages the incorporation of sustainable materials and practices in the skatepark design. Firms should outline their approach to sustainability in the project, including:

**Material Choices:** Use of recycled or locally sourced materials where possible.

**Energy Efficiency:** Design elements that reduce energy consumption, such as the use of natural lighting or water-efficient landscaping.

**Longevity:** Strategies to ensure the skatepark is durable and requires minimal maintenance, thus reducing the environmental impact over time.

**Flexibility in Design**

While the RFP outlines specific design goals, the Town of Bristol is open to innovative and creative design solutions that may fall outside the initial scope. Firms are encouraged to propose unique ideas that enhance the park's functionality, aesthetic appeal, and user experience, even if these ideas deviate from the original specifications.

**Anticipated Project Schedule**

- **RFP Published:** Thursday, September 12, 2024
- **Response Submissions Due:** Thursday, October 17, 2024, noon.
- **Contract Awarded:** October 28, 2024

Questions? Contact Taylor Welch-Plante, Hub Director, at (802) 453-3678 or [hubdirector@bristolvt.org](mailto:hubdirector@bristolvt.org).

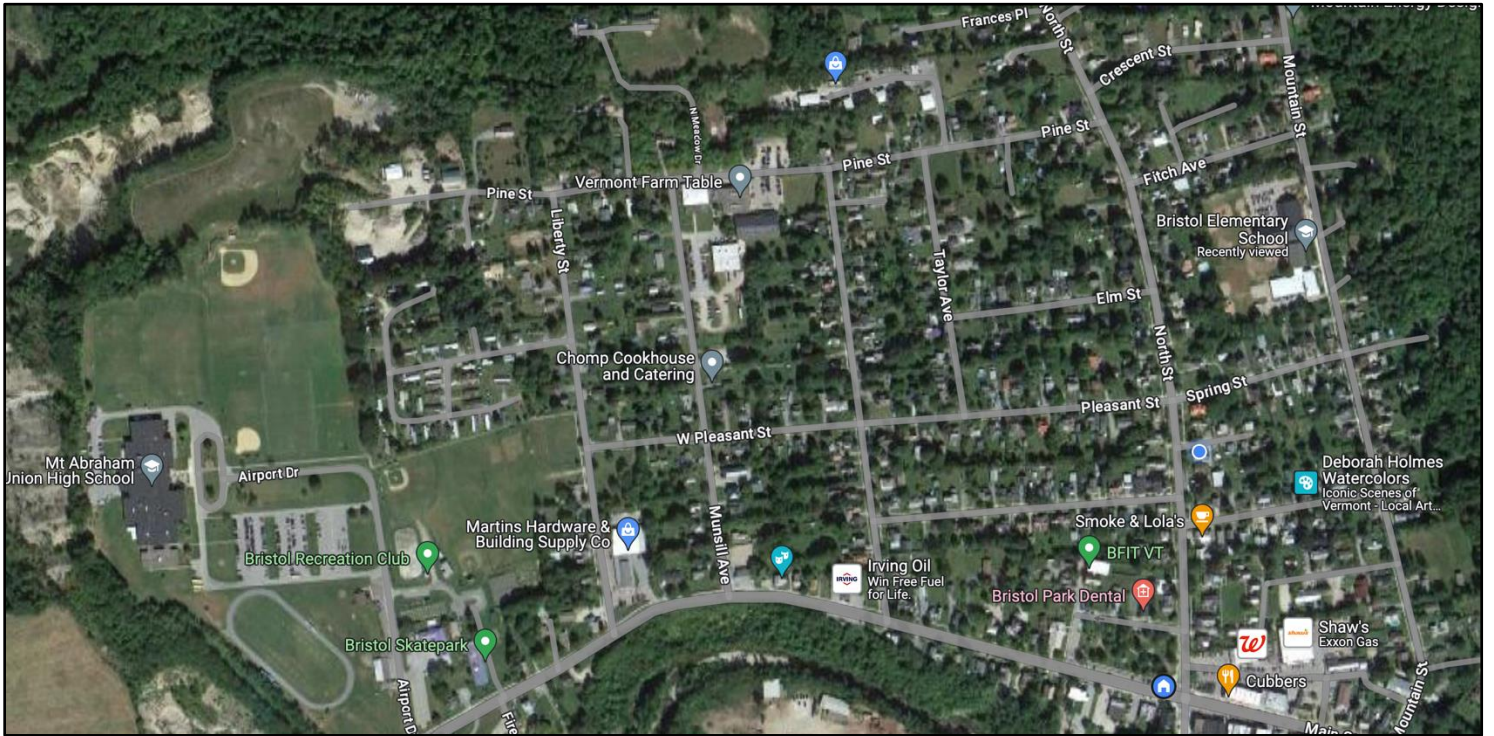
Address or deliver your submittal to:

Taylor Welch-Plante  
Hub Director  
Bristol Recreation Department  
PO Box 249  
1 South Street  
Bristol, VT 05443

Or email proposals to: [hubdirector@bristolvt.org](mailto:hubdirector@bristolvt.org)

Please submit proposals by **noon, October 17, 2024.**

Bristol Recreation Department  
Request for Proposals  
Skatepark Project  
Page 6 of 6



Map of Bristol Village in Bristol, Vermont