

ERGENNES

7

WALTHAM

BRISTOL

NEW HAVEN

LINCOLN

WEYBRIDGE

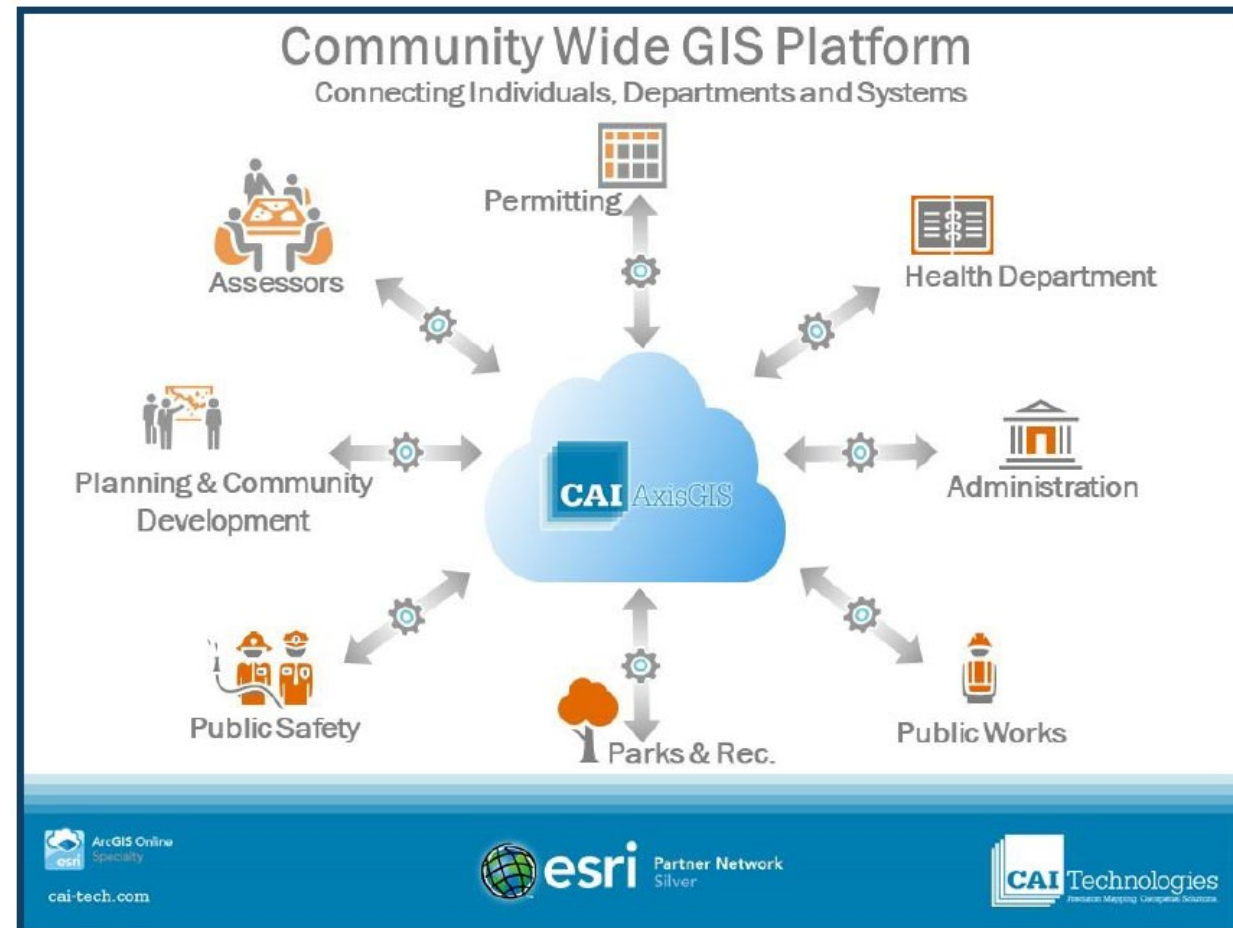
## Overview of Need

- Parcel Data outdated on State Website
- Inconsistency with existing GIS Data





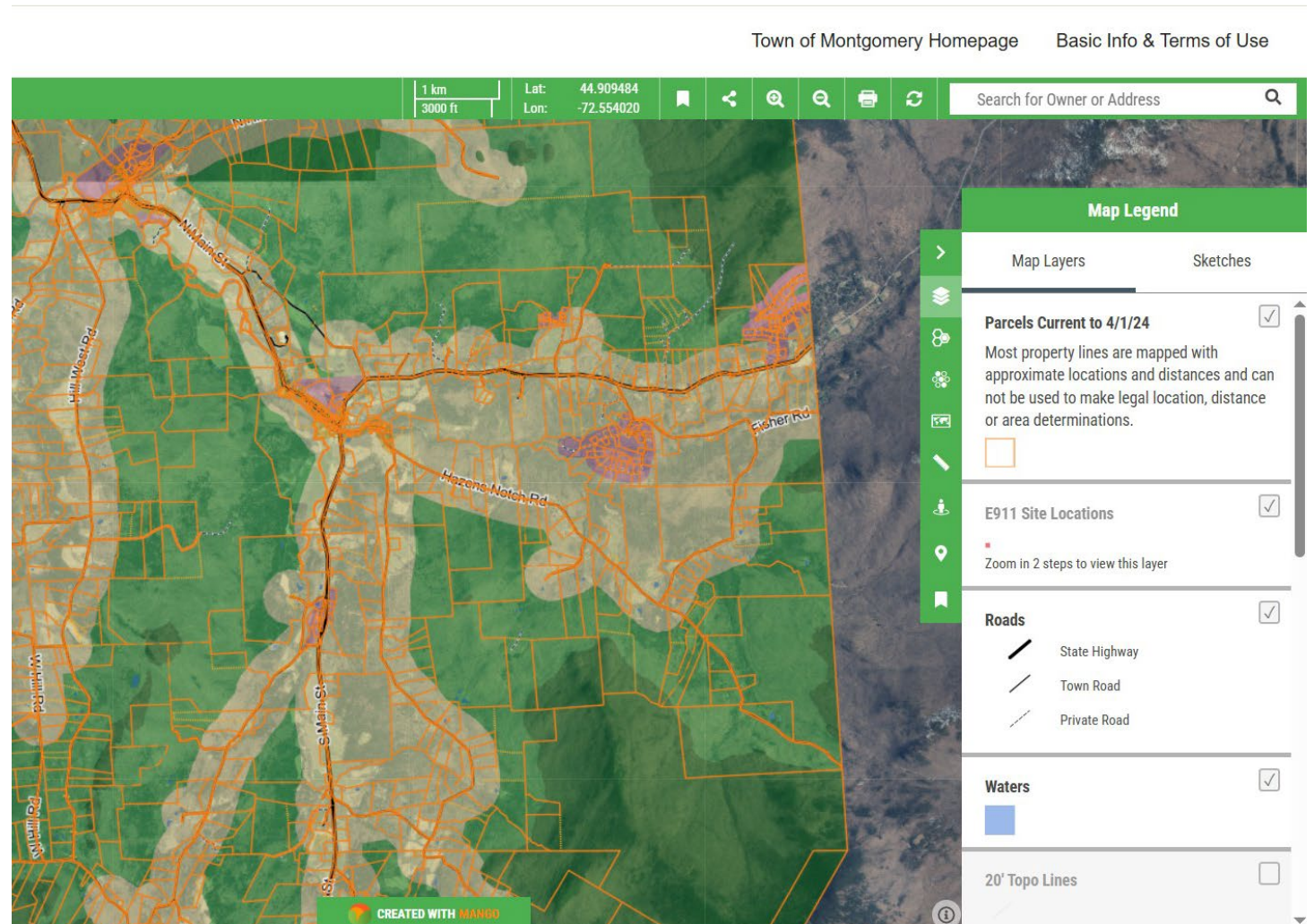
- Location: NH
- Size: <25 employees
- System: Esri (ArcGIS)
- 60 Days to Convert data
- AxisGIS setup within 60 days of conversion
- GIS Refresh for fee



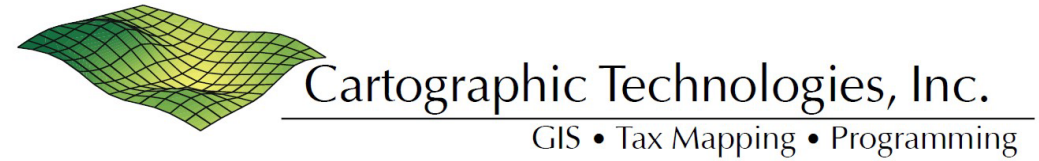


# Cartographic Technology Inc

- Location: VT
- Size: 2 employees
- System: QGIS
- 120 days to complete project
- 30 day for updates
- GIS lot line updates throughout year



# Municipality Feedback



Monkton (2019)  
Shaftsbury (2012)  
Saint Johnsbury

---

Bolton/Monkton (~2021)  
Highgate (2020-2021)  
Warren (2025)  
Derby (2015)

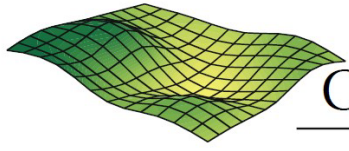
Marlboro (2005)  
Berlin (~2012)  
Westford (2024)



Project Cost	
Tax Map Conversion	\$11,000
AXIS GIS Hosting Service/Setup	\$3,000
Total	\$14,000

Annual Cost: \$3,000

Payment Schedule		
Amount		Payment Due Date
\$3,000	Tax Map Conversion	Upon Signed Contract
\$3,000	Tax Map Conversion	Upon Finished Conversion
\$3,000	Hosting Service	Upon AxisGIS site availability for review
\$5,000	Remaining Tax Map Conversion Balance	Upon site review or after July 1, 2025



Cartographic Technologies, Inc.

GIS • Tax Mapping • Programming

Project Cost	
Correct & Update GIS Data (Conversion)	\$11,475
Updated Taxmaps	3,325
Optional Products	\$350/\$450/\$800
Total	\$14,800
	\$15,150
	\$15,250
	\$15,600

Payment Schedule	Amount Per Invoice
2-year Payment	\$7400
3-year Payment	\$4,993

Annual Costs: \$1565  
Cost range (\$1115-\$1915)

# Funding

Listers Professional Services: \$12,750

available until June 30<sup>th</sup>

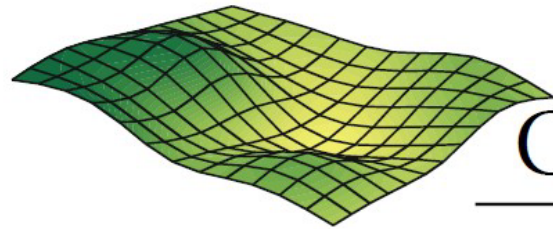
Tax Map Maintenance: \$1,500

Planning: \$5,000



# PZA Recommendation

---



Cartographic Technologies, Inc.

---

GIS • Tax Mapping • Programming